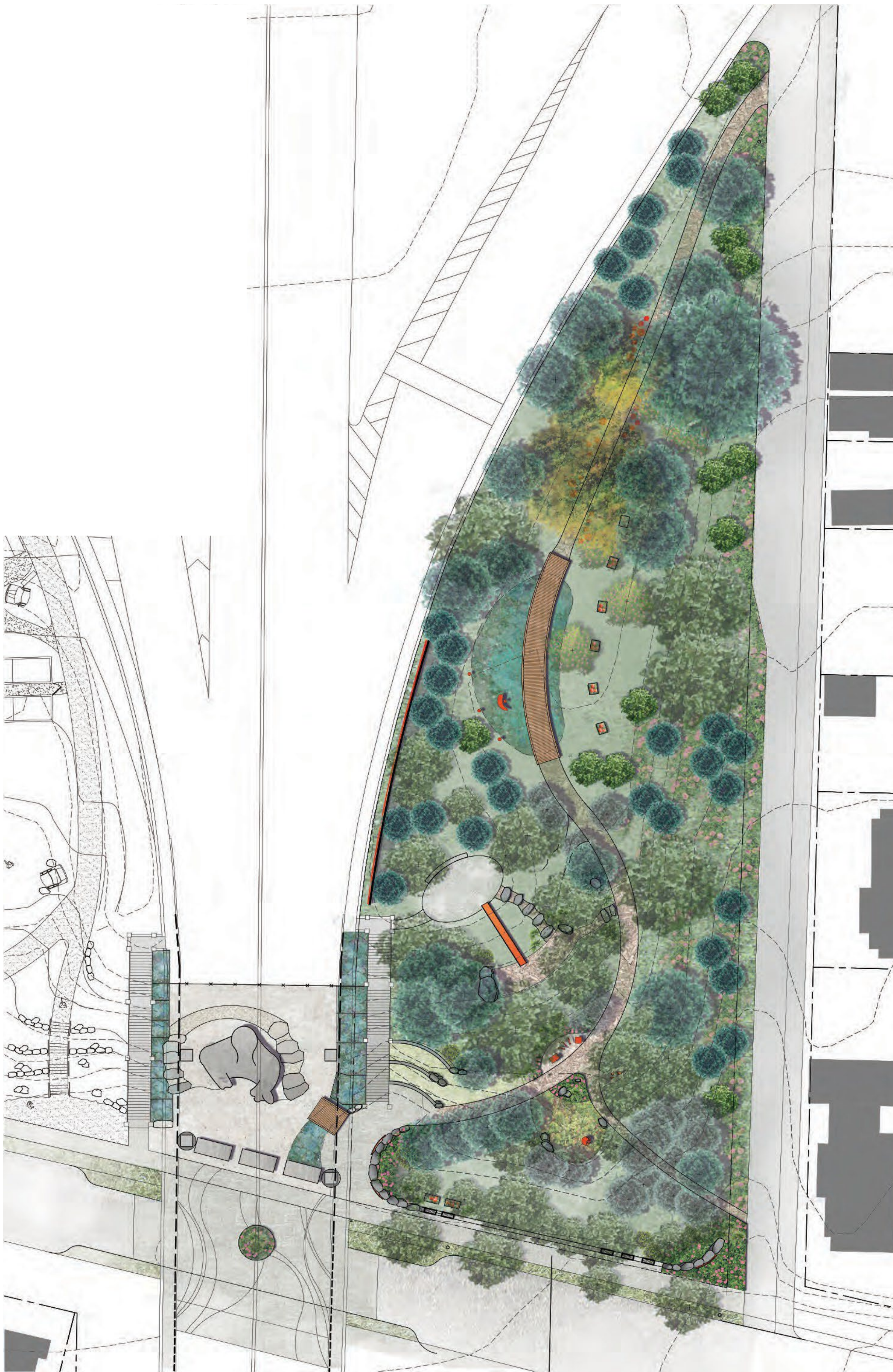


Trolls Knoll

Caring for the urban forest around the Fremont Troll



In 2010, Friends of the Troll's Knoll was awarded a grant for creation of a park through the Parks & Green Spaces Levy Opportunity Fund. The original funding proposal included plans for a park on both the east and west sides of the Troll. However, due to budget limitations, the east side was removed from the project scope and it remains an opportunity for additional development. The west side of [Troll's Knoll Park](#) opened in 2016 and includes a thriving [P-Patch](#). Our vision is to expand the existing Troll's Knoll Park to encompass the green space on both sides for the Fremont Troll.

The Troll's Knoll is a unique space surrounding Seattle's iconic Fremont Troll, including a Seattle P-Patch and 2 acres of beautiful urban forest that are integrated into the local neighborhood. For years, neighbors have grown edible and flowering gardens in the P-Patch, walked with their dogs and children to the peekaboo view of downtown, and passed through daily on their way to the bus stations which unlock the rest of the city.

Each year thousands of Seattle neighbors and travelers visit the Fremont Troll to take photos with this larger-than-life sculpture and get a glimpse into Fremont's rich tradition of artistic expression.

Friends of the Troll's Knoll is a community of neighbors dedicated to transforming the Troll Knoll into an active green space where Fremont residents and visitors can enjoy the outdoors. Through ongoing clean-up initiatives, park development, and art installations, we are working to transform the east side Troll's Knoll into a Seattle park.



Friends of the Troll's Knoll

Designer - T. Frick, Studio41

Strategic partner - Groundswell

Fiscal sponsor - Seattle Parks Foundation

Funders: City of Seattle Parks & Green Spaces Levy Opportunity Fund & Department of Neighborhoods Matching Fund



OUT IN FRONT

SMALL-SCALE INTERVENTIONS

