



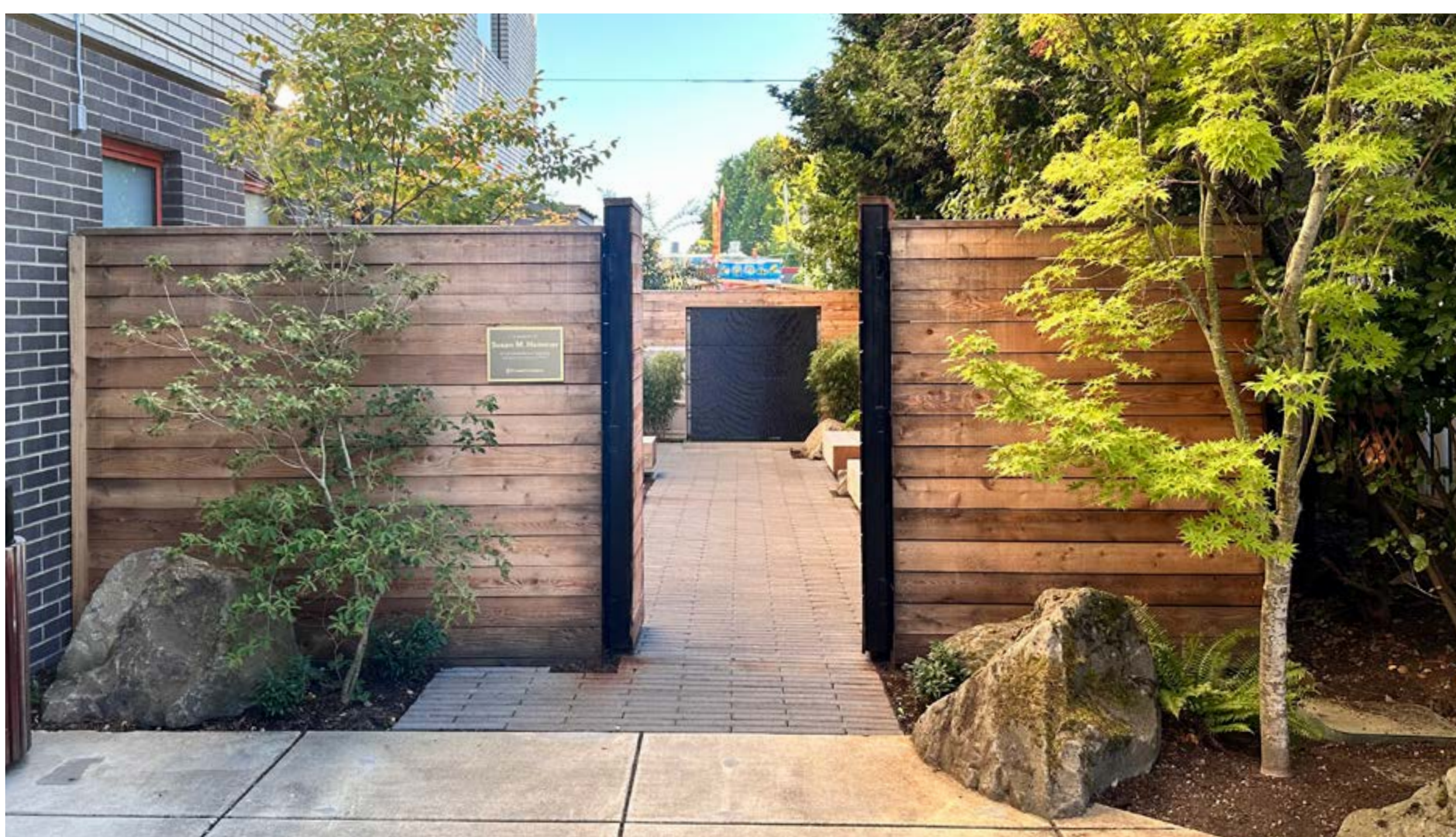
BEFORE



AFTER

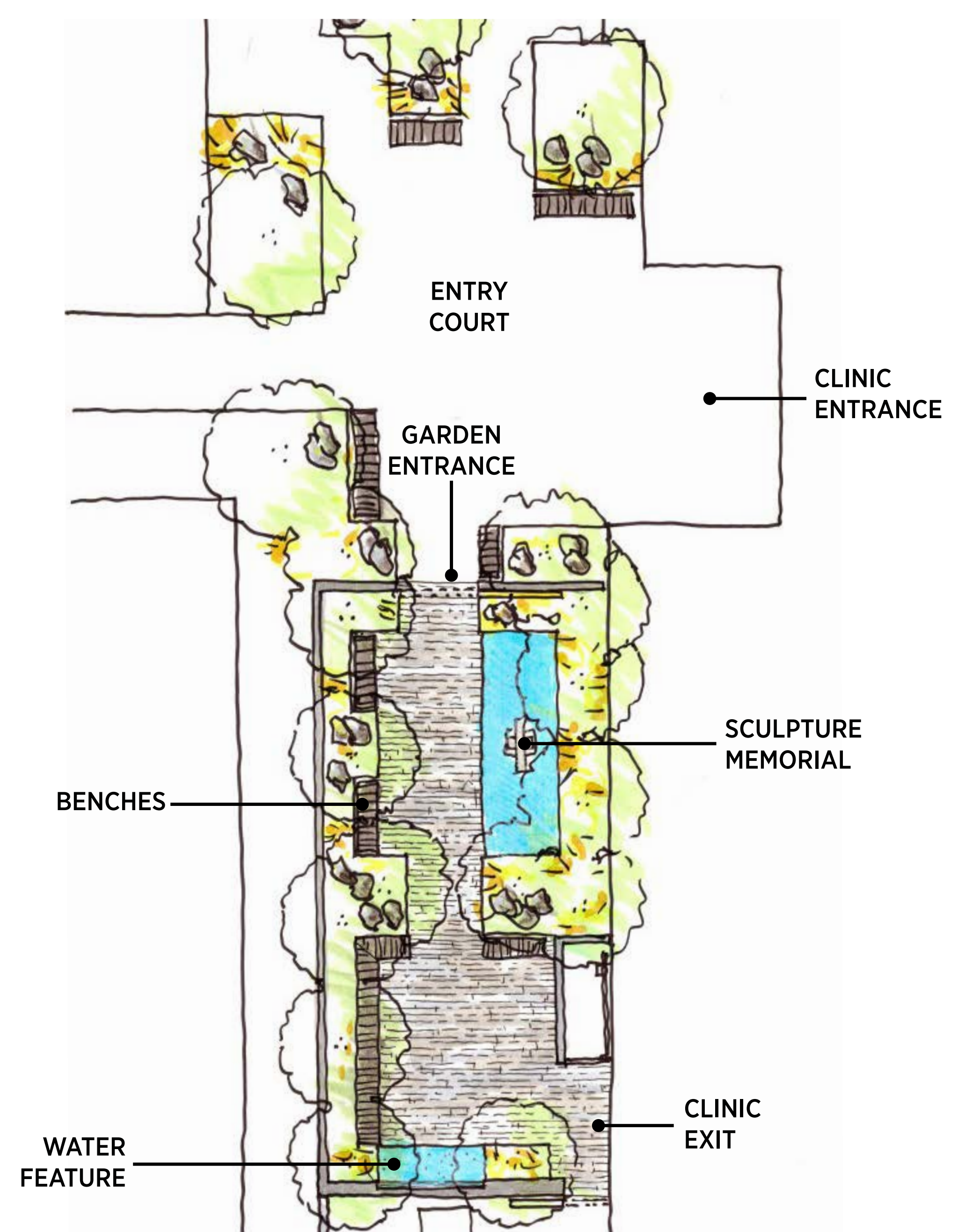


THRESHOLD



SUSAN B. HAMMER MEMORIAL GARDEN PORTLAND, OR | 2024

A compact yet powerful intervention, the courtyard reimagines a once-overlooked remnant space into a restorative sanctuary for patients, caregivers, and visitors. Adjacent to a wellness clinic, the transformed garden offers aesthetic respite - it delivers a profound emotional and psychological experience extending the ethos of healing beyond the clinic's walls. At its center lies a contemplative water feature anchored by a sculpture from renowned artist Lee Kelly. Collaboration between artist and landscape architect was essential to the design's intent: the sculpture, gracefully poised within the reflective pool, invites quiet introspection and serves as a constant visual anchor from within the clinic and across the surrounding garden.



OUT IN FRONT

SMALL-SCALE INTERVENTIONS

PLACE

