

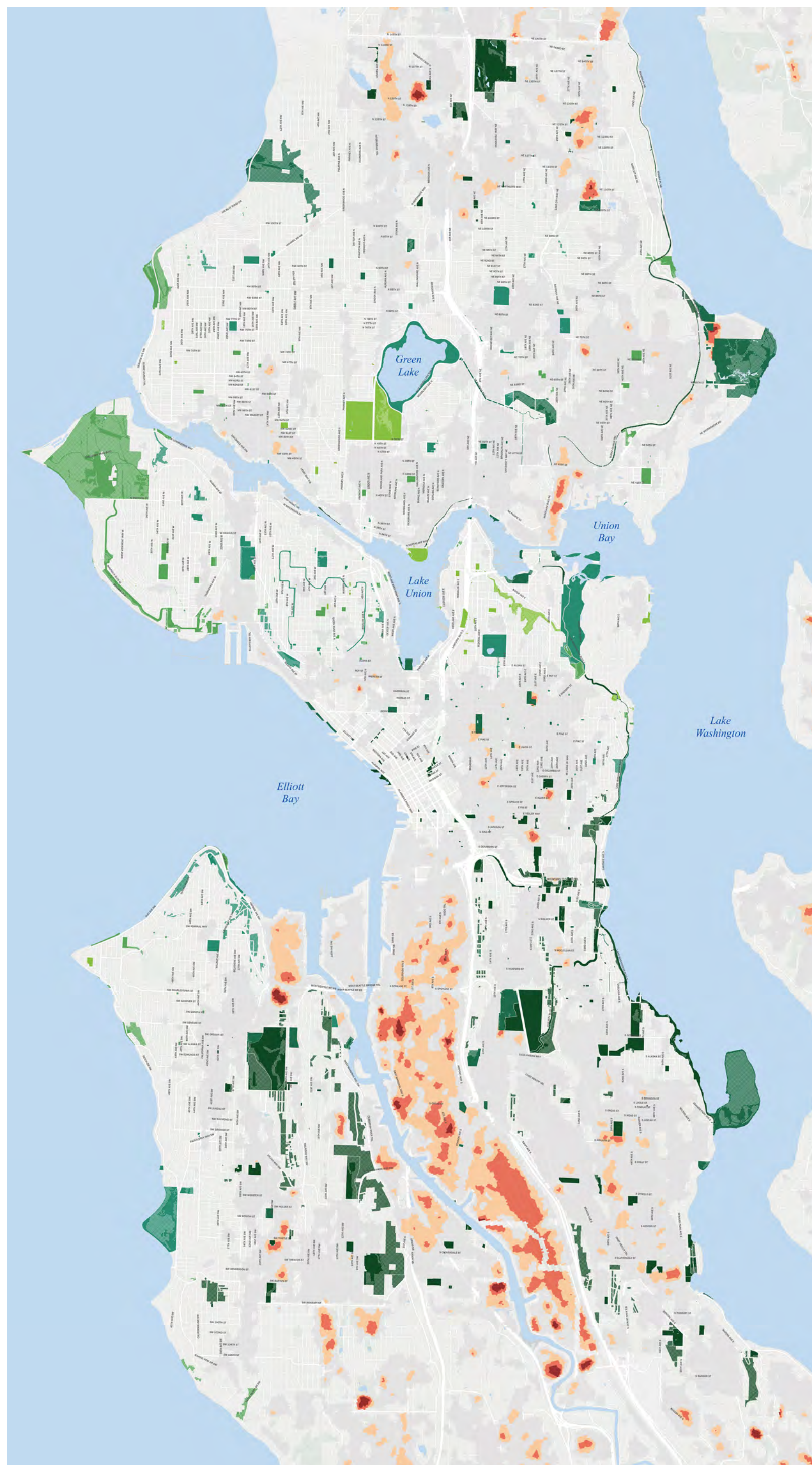
Seattle Parks are losing trees.



Tree for Seattle Parks

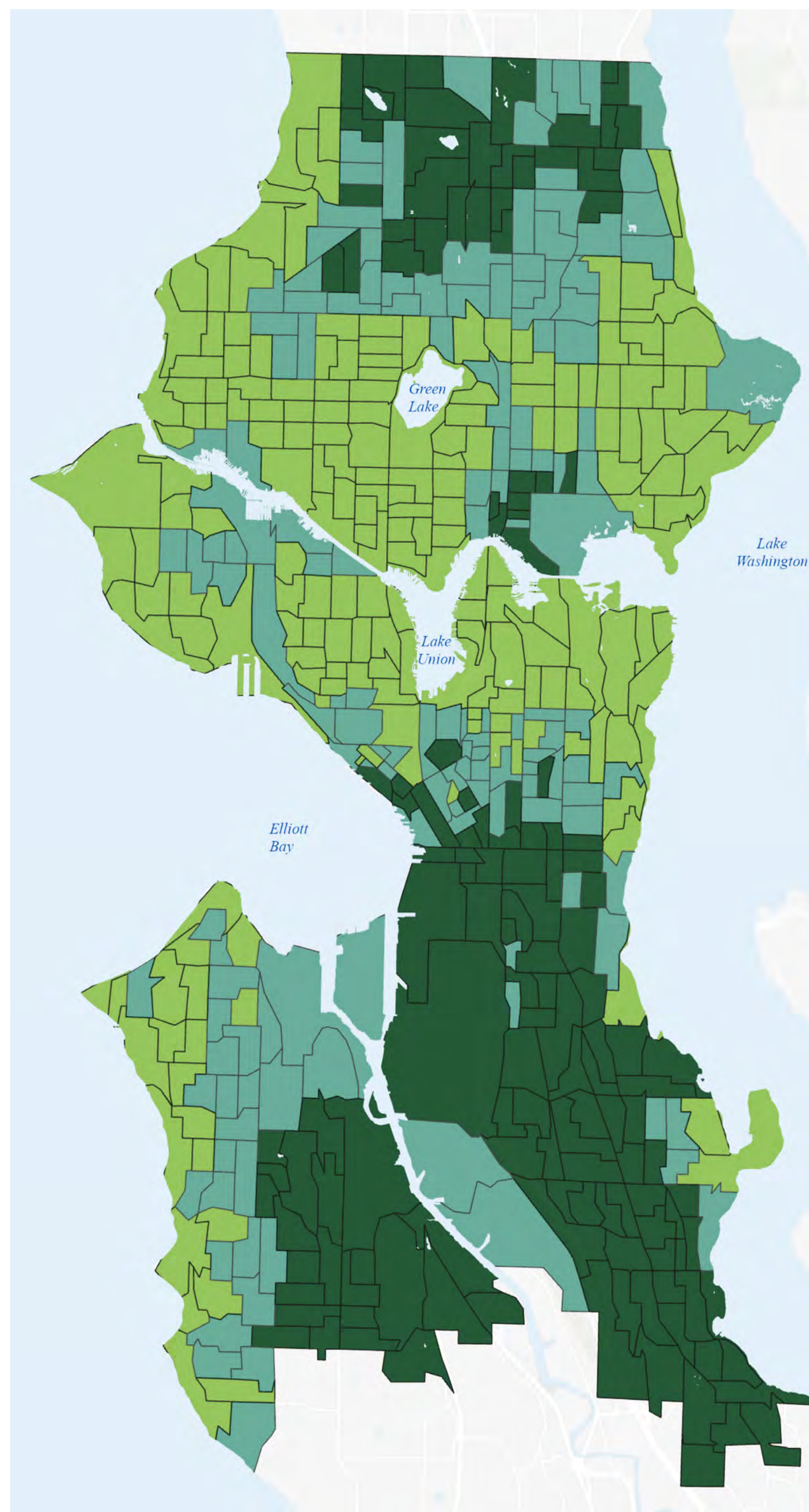
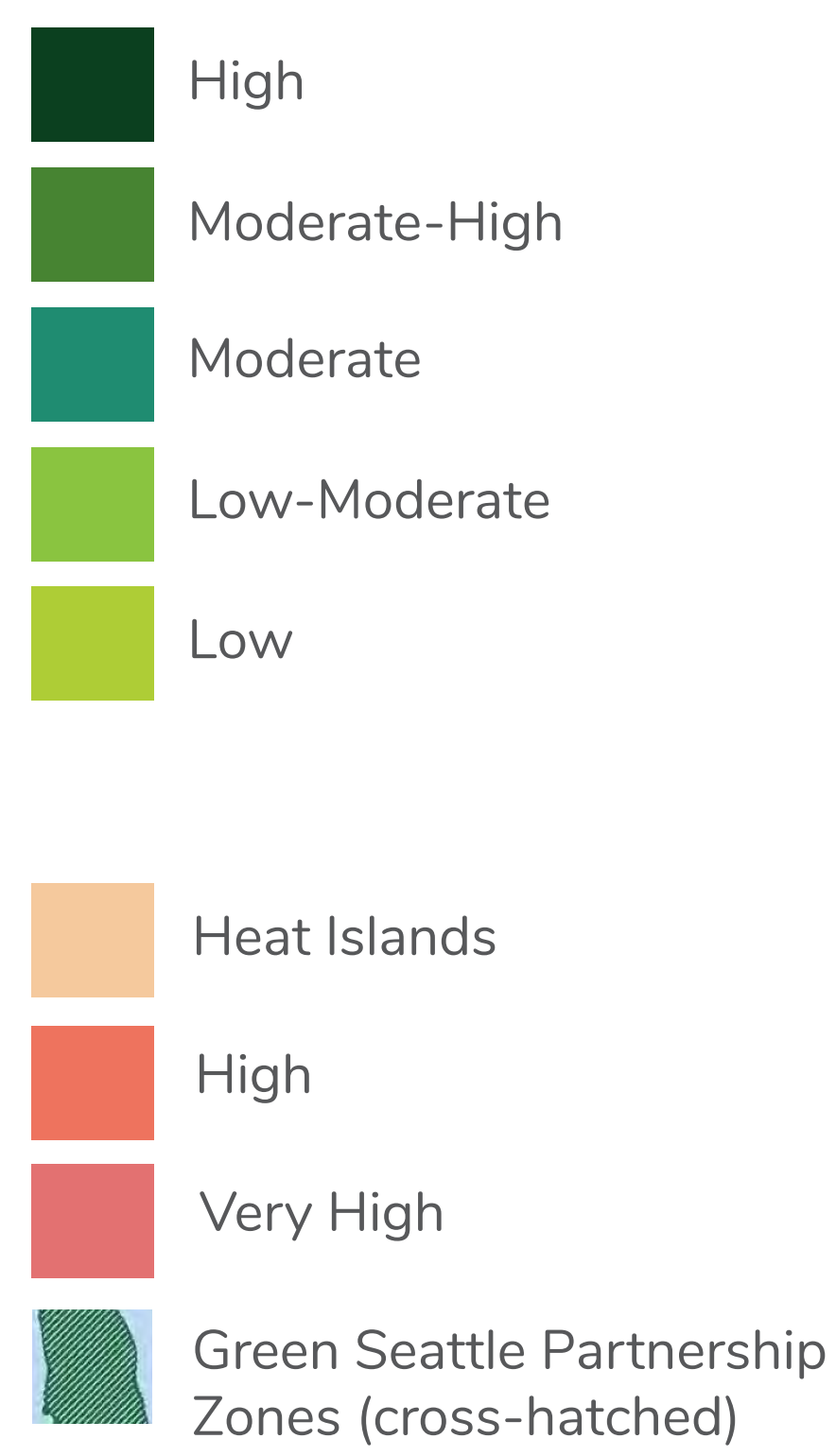
is a report designed to combat this problem in an equitable, sustainable way.

Site Selection



HUMAN-TREE NEEDS MAP:

Demonstrates level of need for Developed parks reflecting economic and social index within park walksheds.



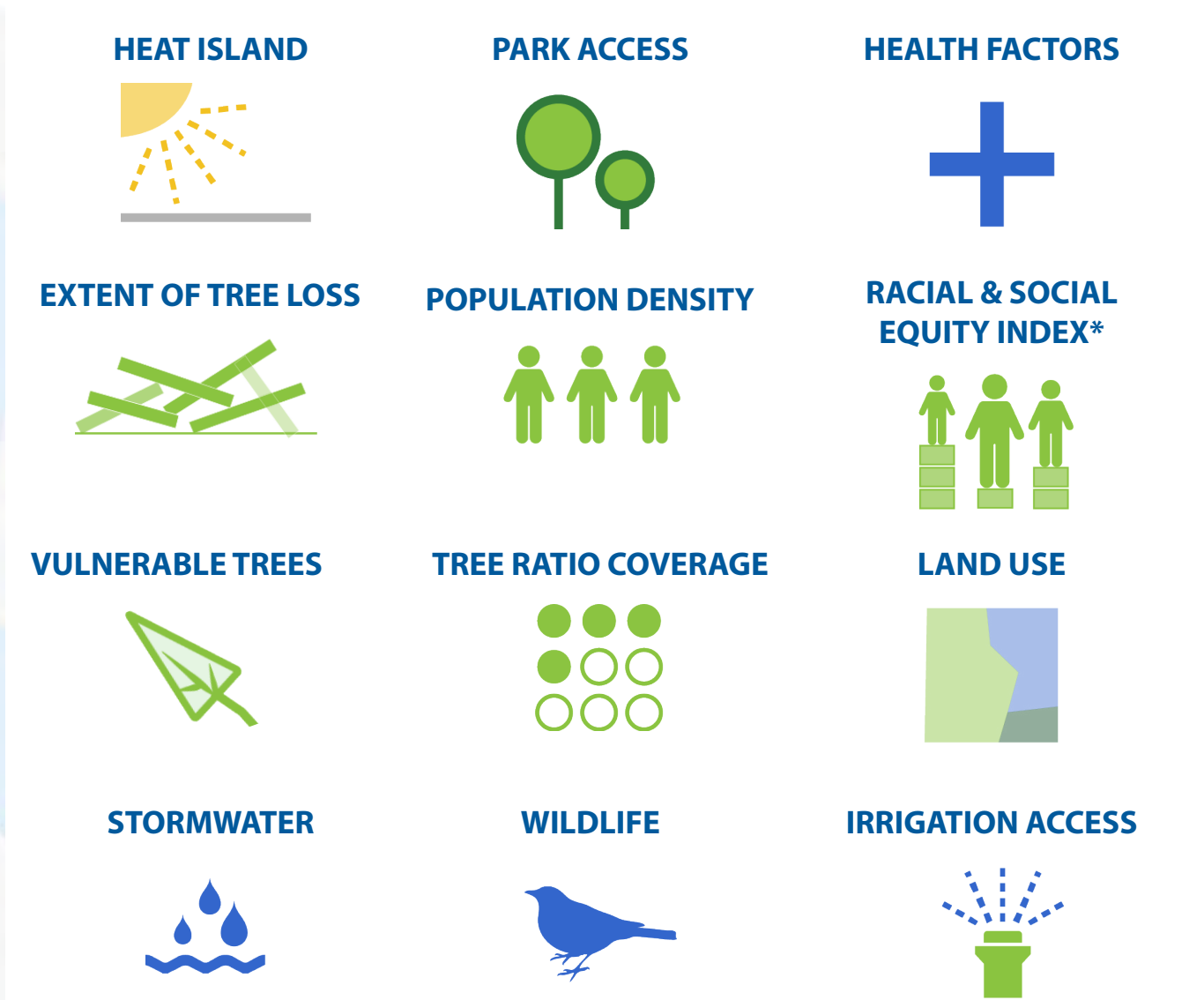
ALLOCATION:

The city is divided into levels of need based on the Racial and Social Equity Index (RSEI). Those levels of need dictate the allocation of trees in a given funding cycle.



FACTORS:

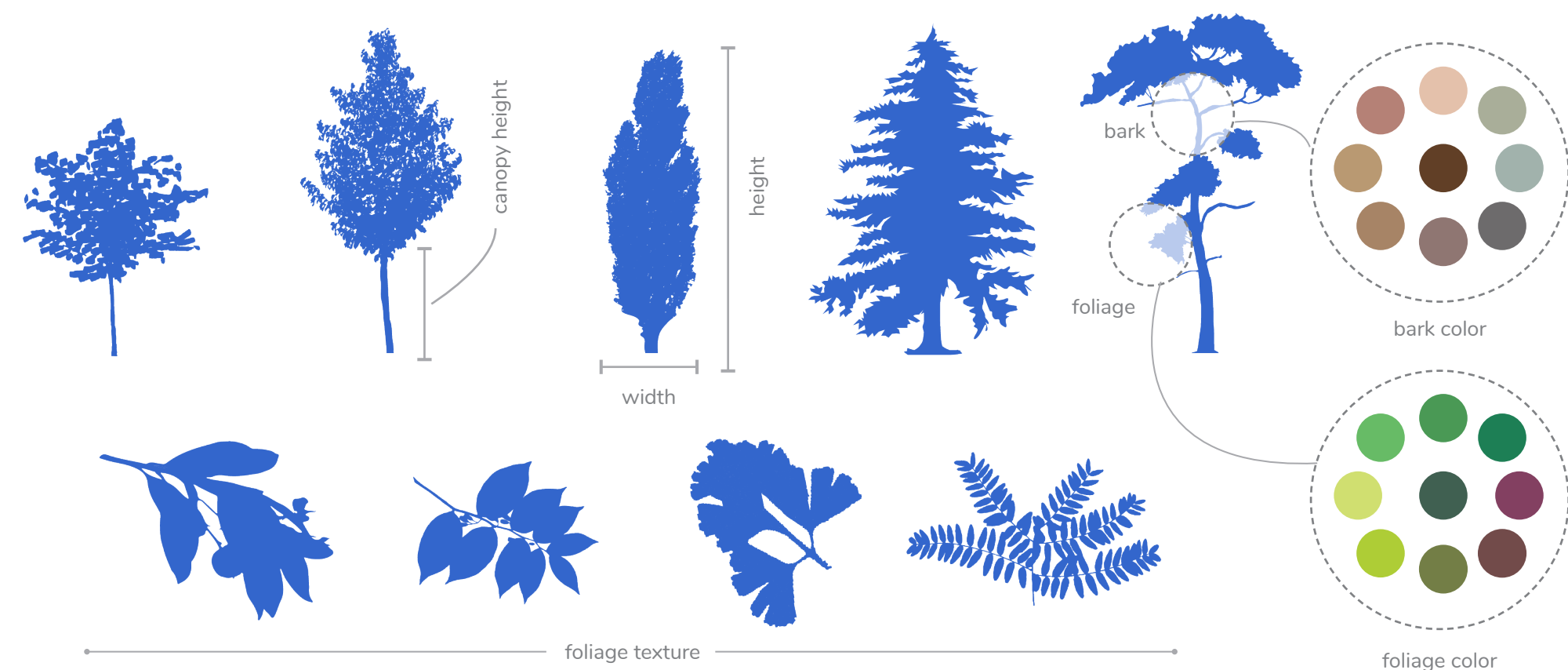
Park sites are evaluated based on relevant factors. Then they are selected for tree planting for the upcoming funding cycle.



Tree Species Selection

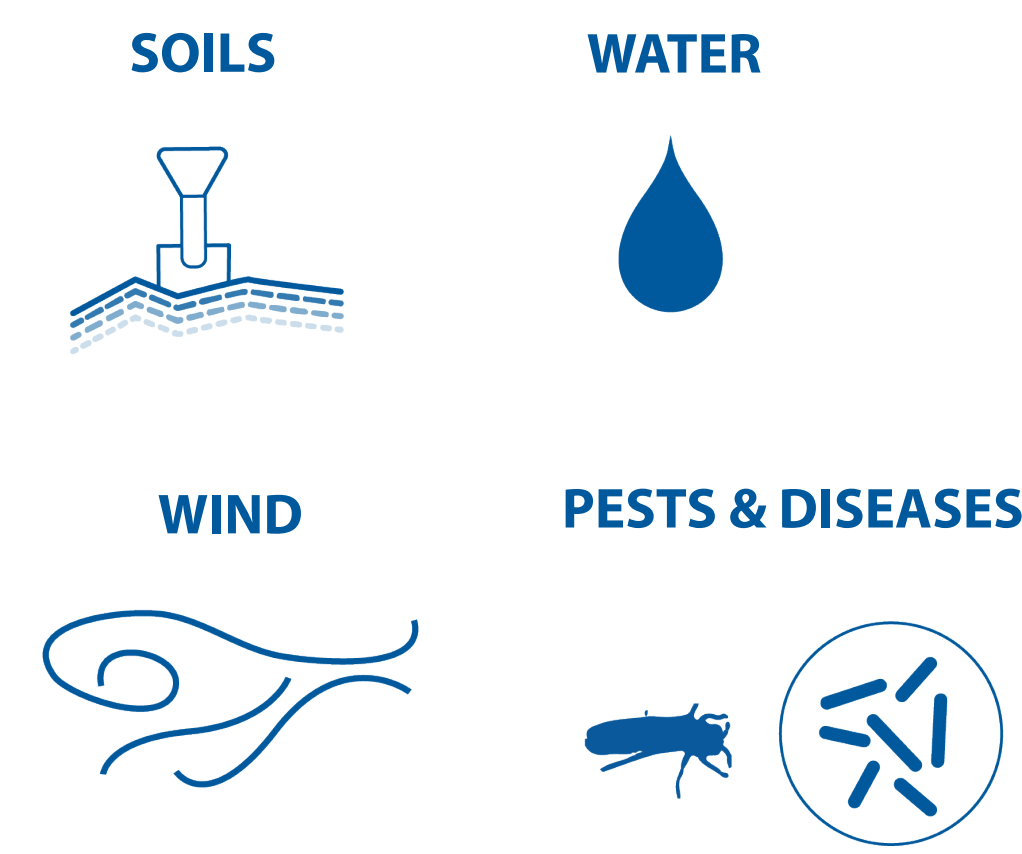
AESTHETICS:

Tree species are selected to provide the right character in terms of overall size and shape, height, foliage, texture, color, evergreen vs. deciduous, fragrance, and other sensory characteristics.



ECOLOGY:

Practical site characteristics related to ecology are considered so the tree species will work on the site.



TEAM:

Seattle Parks and Recreation, Friends of Seattle's Olmsted Parks, clients; Herrera Environmental Consultants, GIS mapping and analysis; Berger Partnership, landscape architecture, graphics



OUT in FRONT
Justice, Equity, Diversity, Inclusion