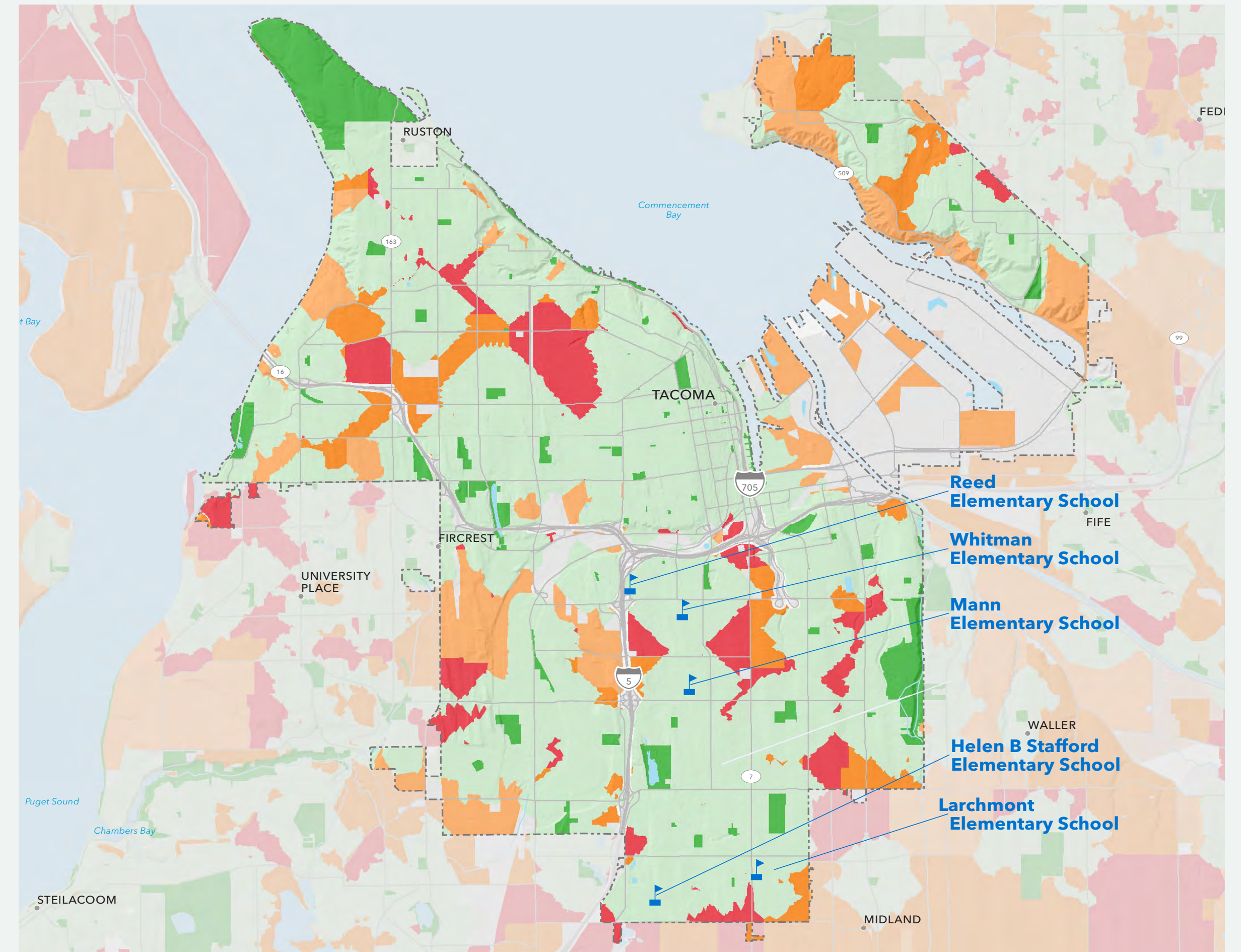
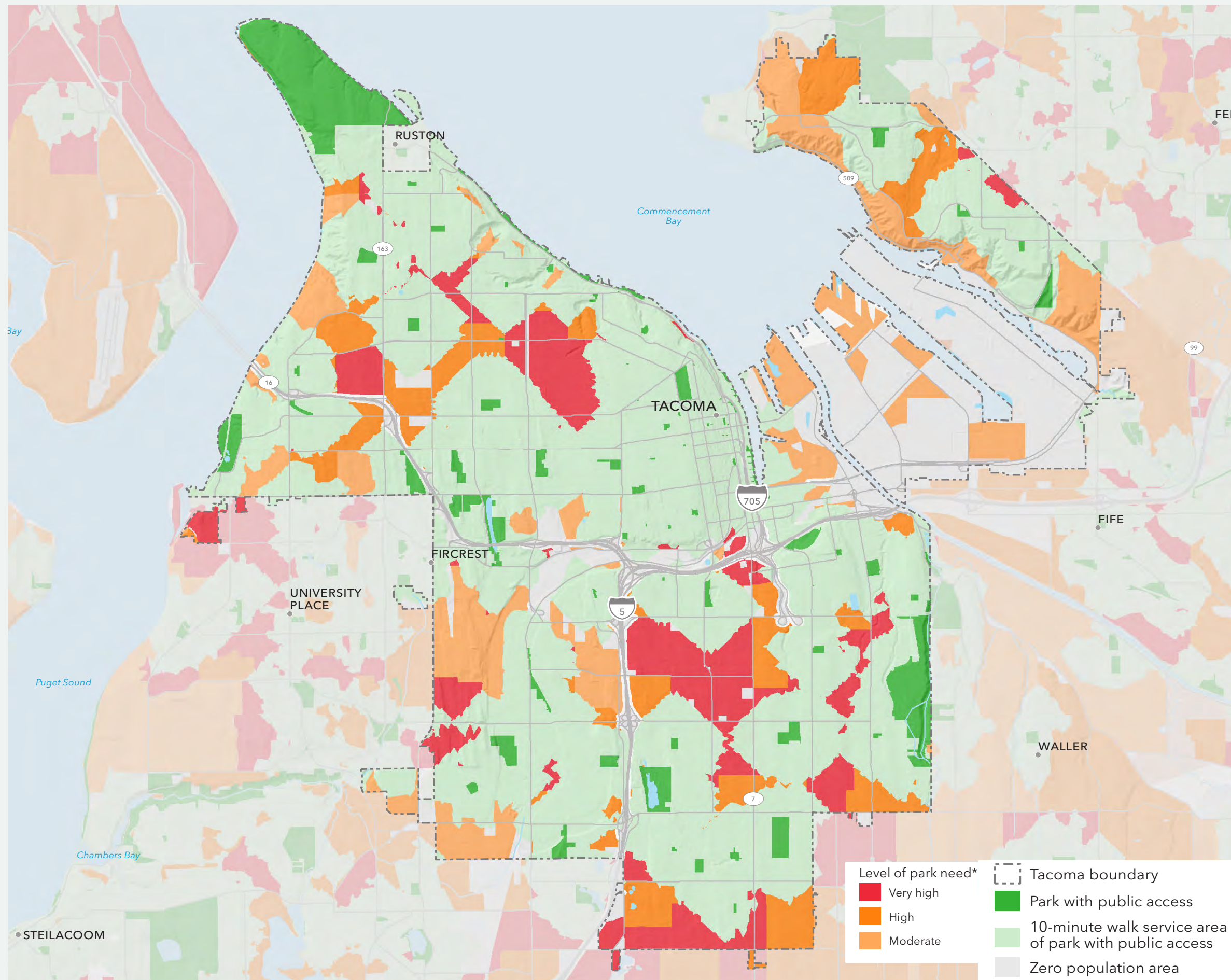


# Tacoma Community Schoolyards

A common sense solution to addressing park access inequality

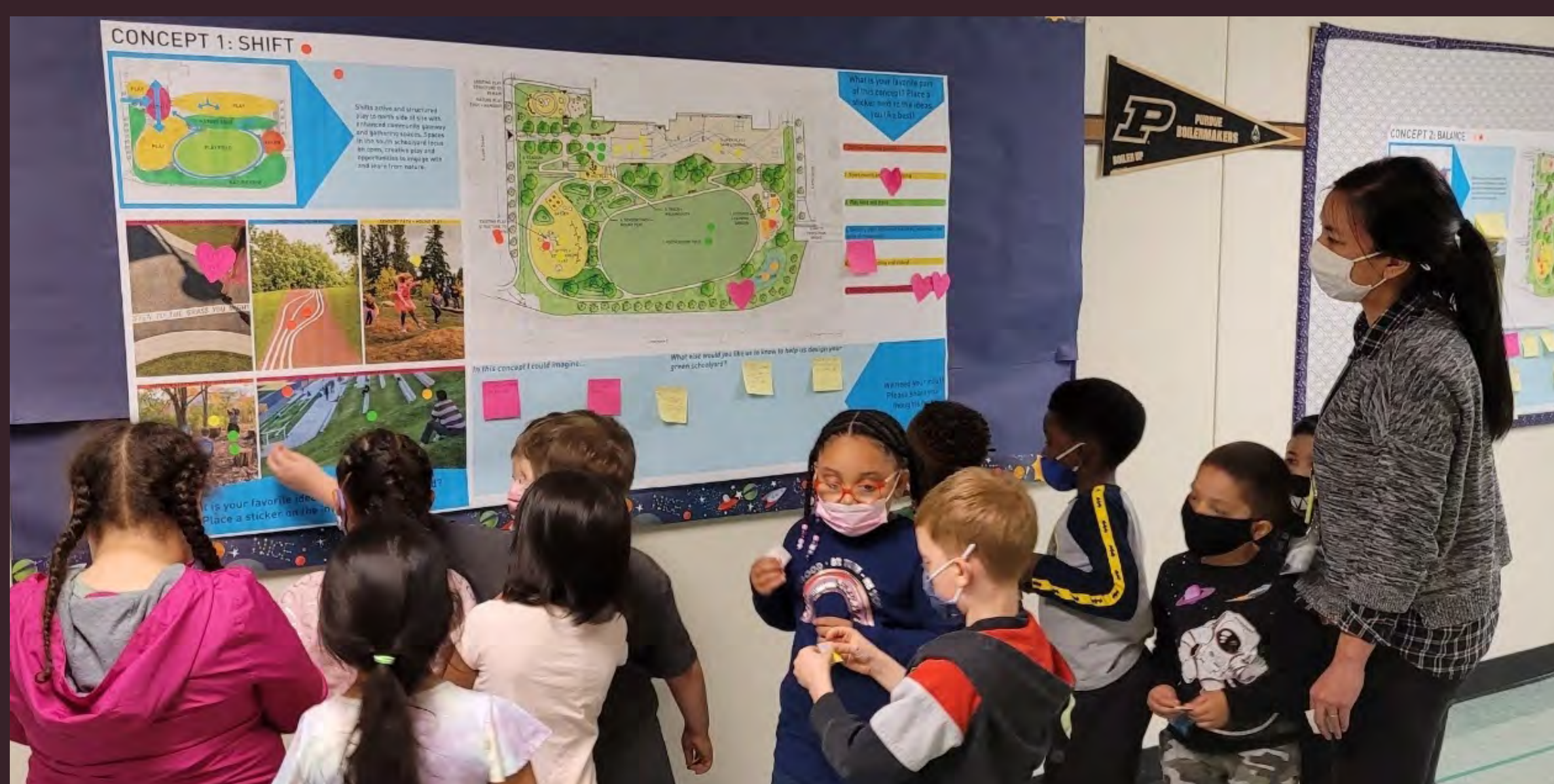


## Tacoma Level of Park Need

More than 65,000 people, or **31% of residents**, in Tacoma do not live within a **10-minute walk of a park**. This is the largest park access gap of any of Washington's major cities. Tacoma's lack of park access is concentrated in its South End neighborhood where only 7% of residents have a park within walking distance. Lack of park access also coincides with environmental justice and health issues such as increased exposure to heat and particulate matter.

## Project Impact

Community Schoolyard projects **transform underused outdoor schoolyard space into vibrant public parks**, full of trees, shade, and places to exercise, play, and enjoy the outdoors that stay open to neighbors after school and on weekends. **Trust for Public Land** in partnership with Metro Parks Tacoma, Tacoma Public Schools, and the Tacoma community, **will renovate and open five Community Schoolyards** in Tacoma's South End by the end of 2024. These projects will ensure that **more than 25,000 people have access to a great park** within a 10-minute walk.



**Trust for Public Land** works hand-in-hand with partners and communities to make the most of their schoolyards. The participatory design process invites the whole community to envision schoolyards that meets everyone's needs.



Community Schoolyard at Mann Elementary



1218 3rd Ave, Suite 1700  
Seattle, WA 98101

Project Team:

**Site Workshop**  
Landscape Architecture

**Mayfly Engineering**  
Civil Engineering