

# BUILDING COMMUNITY IN RURAL SPACES



## CHILOQUIN GREEN SCHOOLYARD

As it sits by the confluence of two rivers, the site of Chiloquin Elementary School has always been a place of gathering, a place occupied by the Klamath people from time immemorial. Today, the school grounds are the heart of the community where education, play, and cultural moments come together. This project builds on the pride of place in Chiloquin to reimagine play for the children of Chiloquin while expanding the programming such that the entire community can enjoy the space outside of school hours. The design centers the new covered basketball court on the site as a year-round community hub to host an expanded set of activities from sports to celebrations. Large swaths of Ponderosa pines, quaking aspen, Oregon white oak, native meadow, and sagebrush along with walking paths frame new spaces for everyday life.

Through conversations with tribal elders, we crafted the planting palette to include signature species such as *Prunus virginiana* (doycq'as, chokecherry) and *Prunus subcordata* (dmolo, Klamath plum) and created a signage trail to honor the ethnobotany of the region telling the connection between people and plants specific to the Klamath Tribes and the people of Chiloquin.

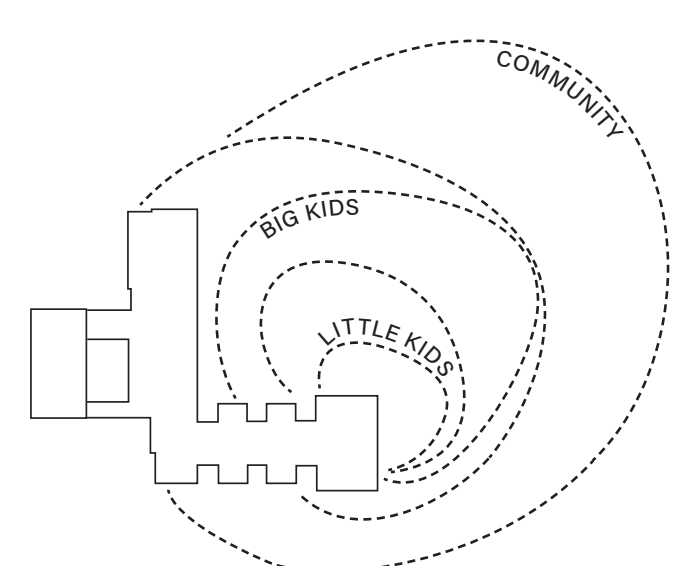
### FACTS

LOCATION: Chiloquin, Oregon  
 SIZE: 4.5 acres  
 CLIENT: The Trust for Public Land  
 OWNER: Klamath County School District  
 PROJECT TEAM: ABLE (Landscape Architecture), ZCS Engineering Architecture (Structural Engineering), Elizabeth Skolman (Graphic Design), Jade Souza (Signage Text), Harold Wright (Klamath Translation), Betty Blackwood, Janice Miller, Perry Chocktoot, Clayton Dumont (Interpretive Signage Knowledge)

Photography: ABLE, The Trust for Public Land



### SAFE SPACES FOR ALL AGES



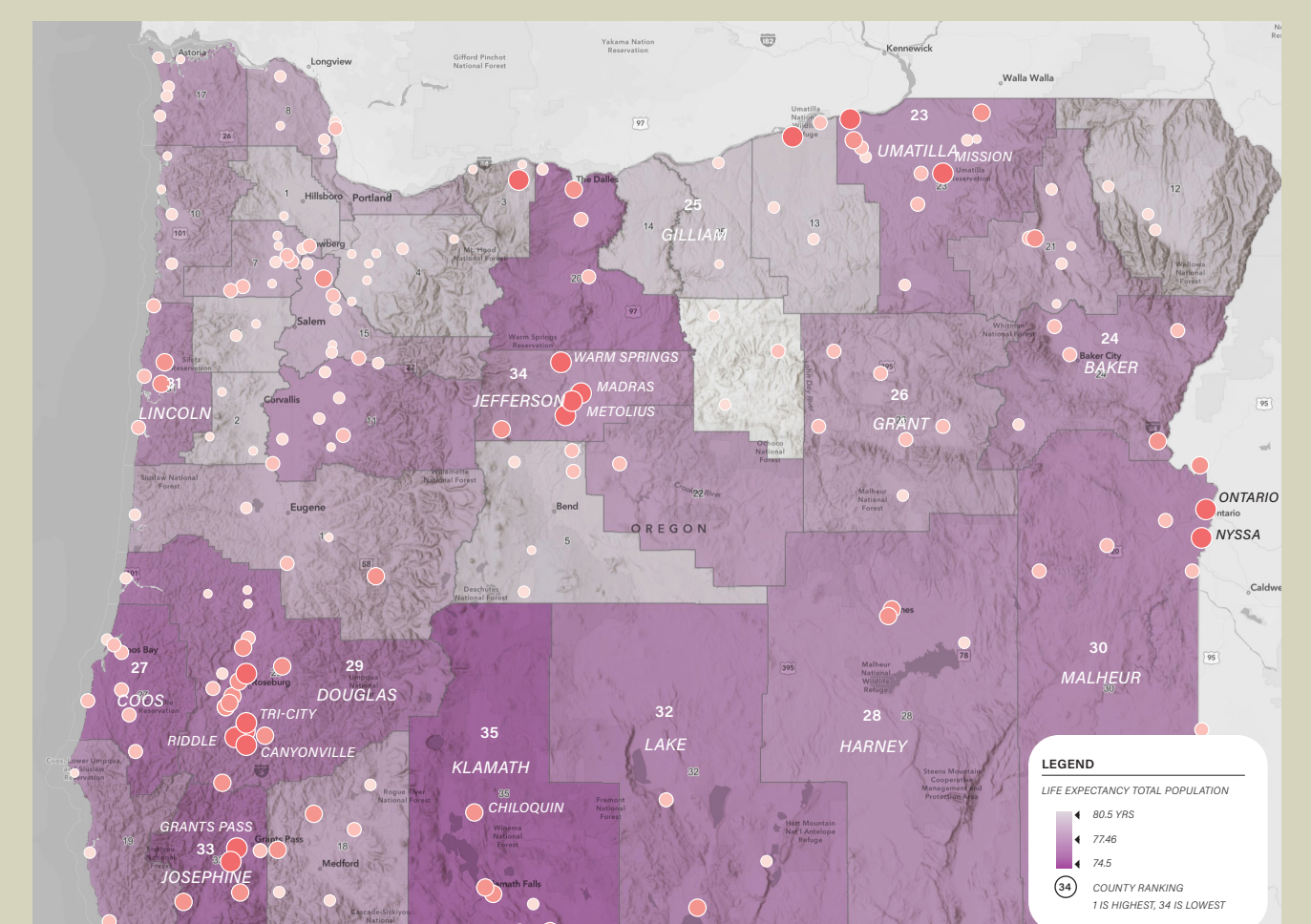
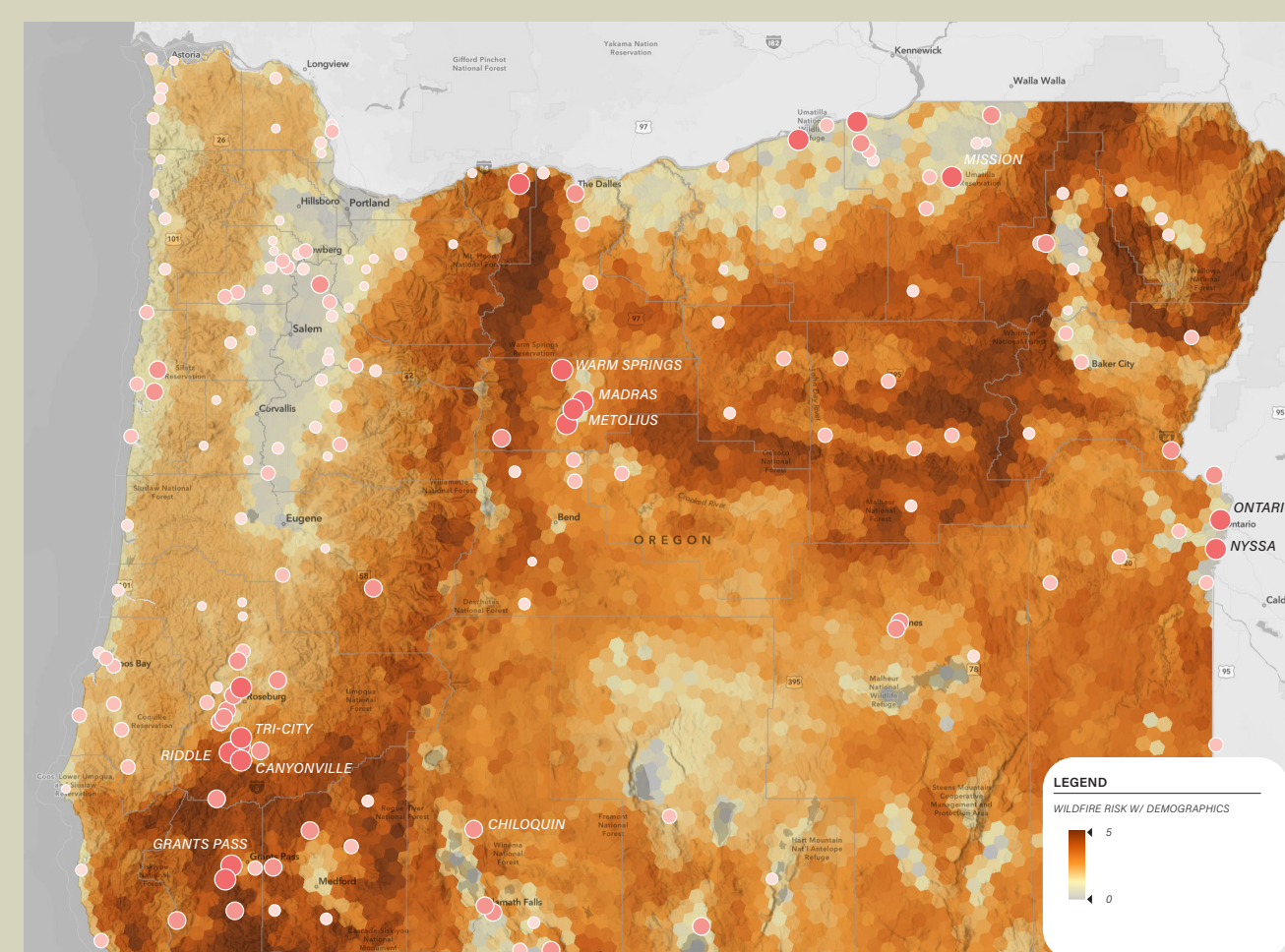
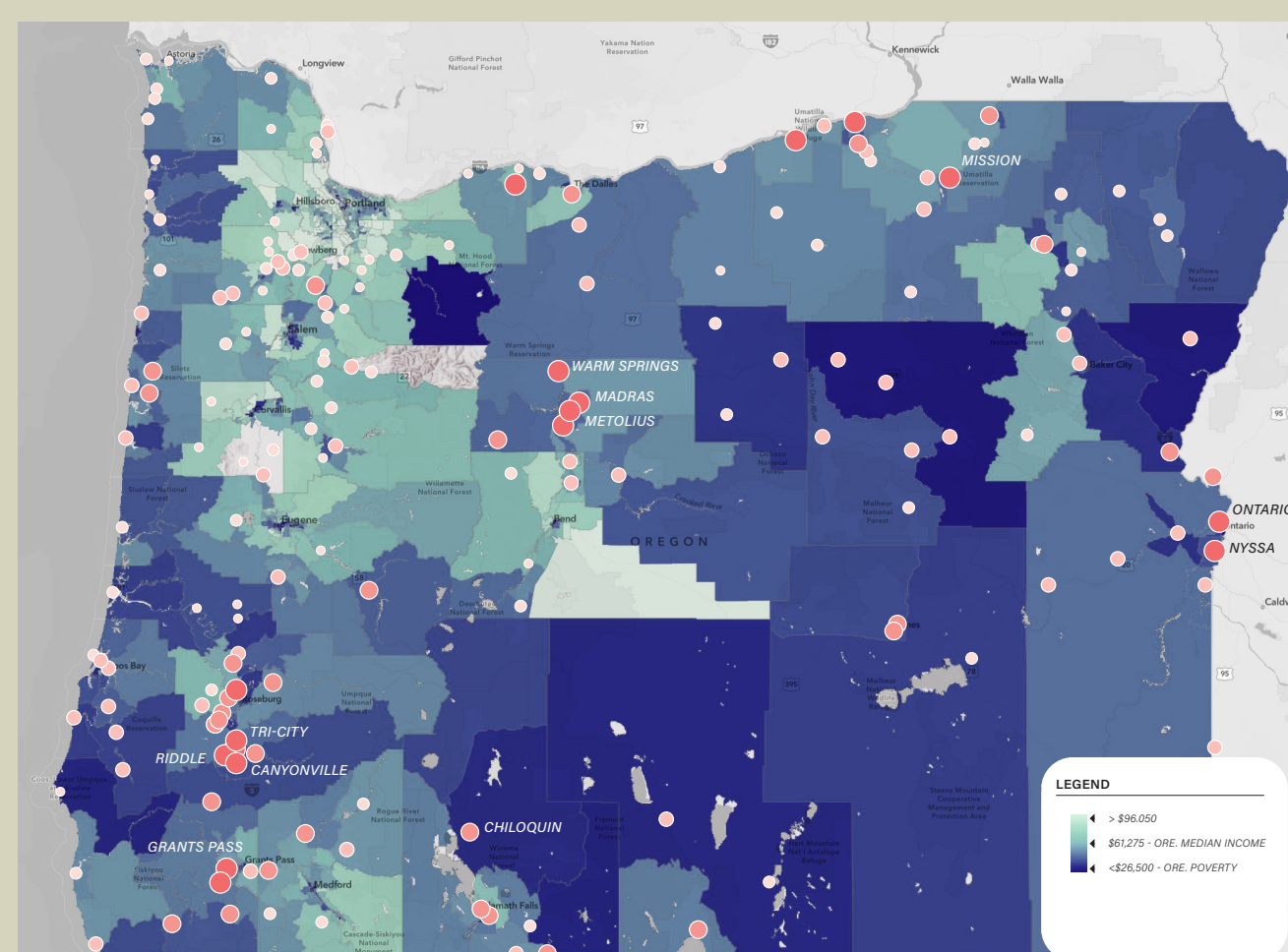
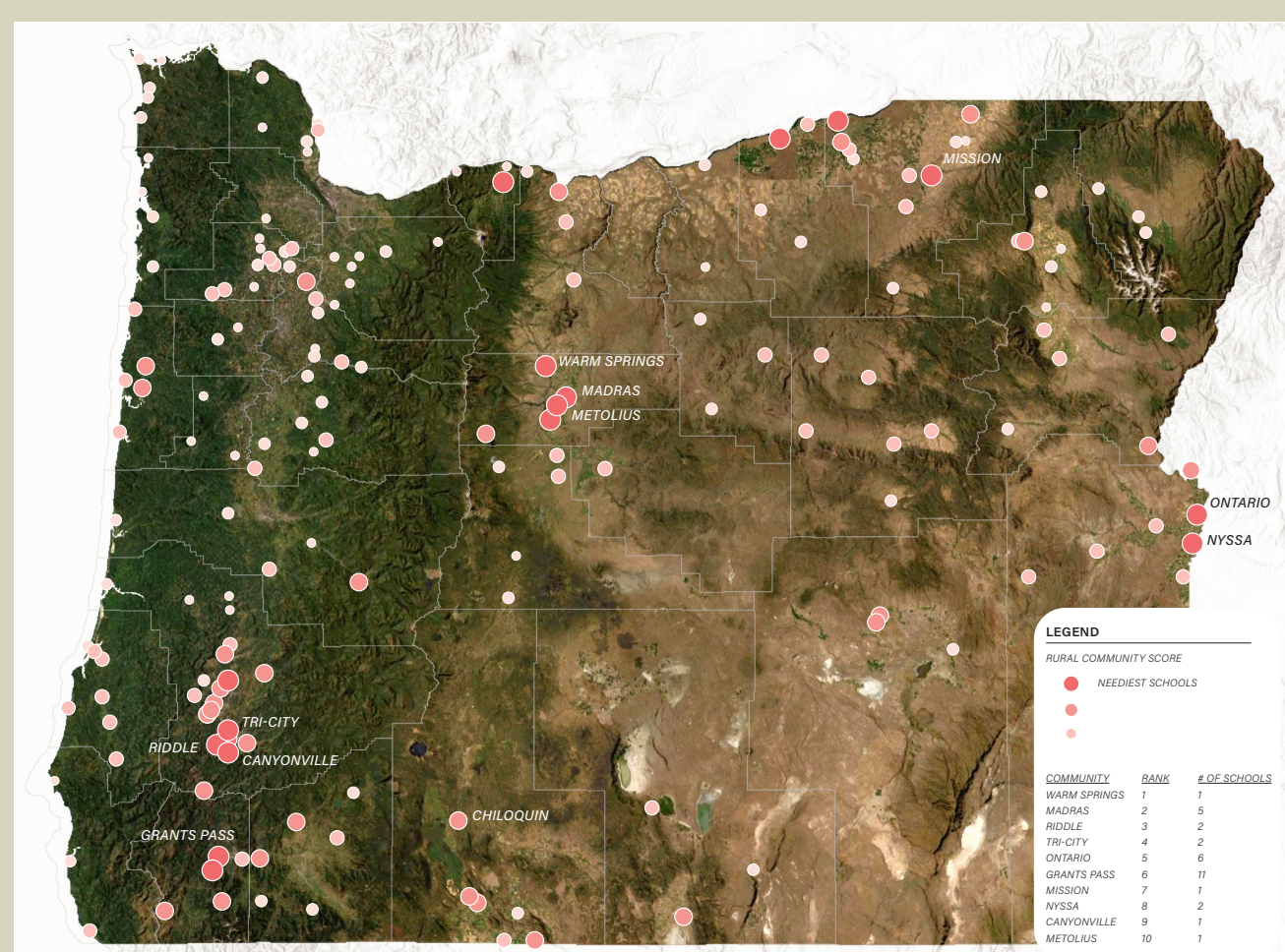
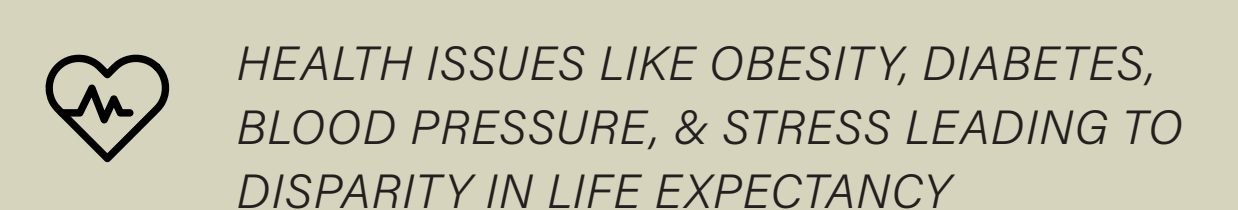
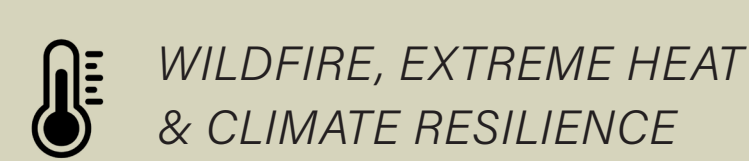
**ABLE**



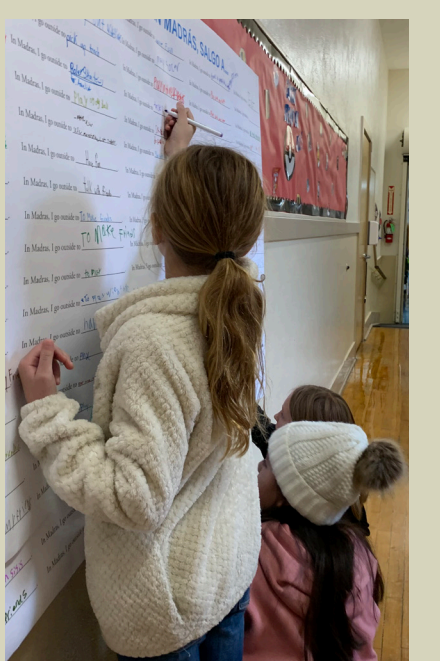
**TRUST FOR PUBLIC LAND**

## OREGON RURAL COMMUNITY SCHOOLYARDS PROGRAM

WHY RURAL COMMUNITY SCHOOLYARDS? TO ADDRESS...



Community Schoolyards are designed and activated by working in partnership with local youth, residents, and organizations to create a culturally rich, accessible, and safe space to connect people to nature and each other. During school hours the Community Schoolyard becomes a place for students to advance their physical, emotional, and educational well-being, and is open to the surrounding community after school hours. Community Schoolyards advance health, climate resilience, and education and are a nature-rich hub for equitable community cohesion.



OUT IN FRONT: JUSTICE, EQUITY, DIVERSITY, INCLUSION