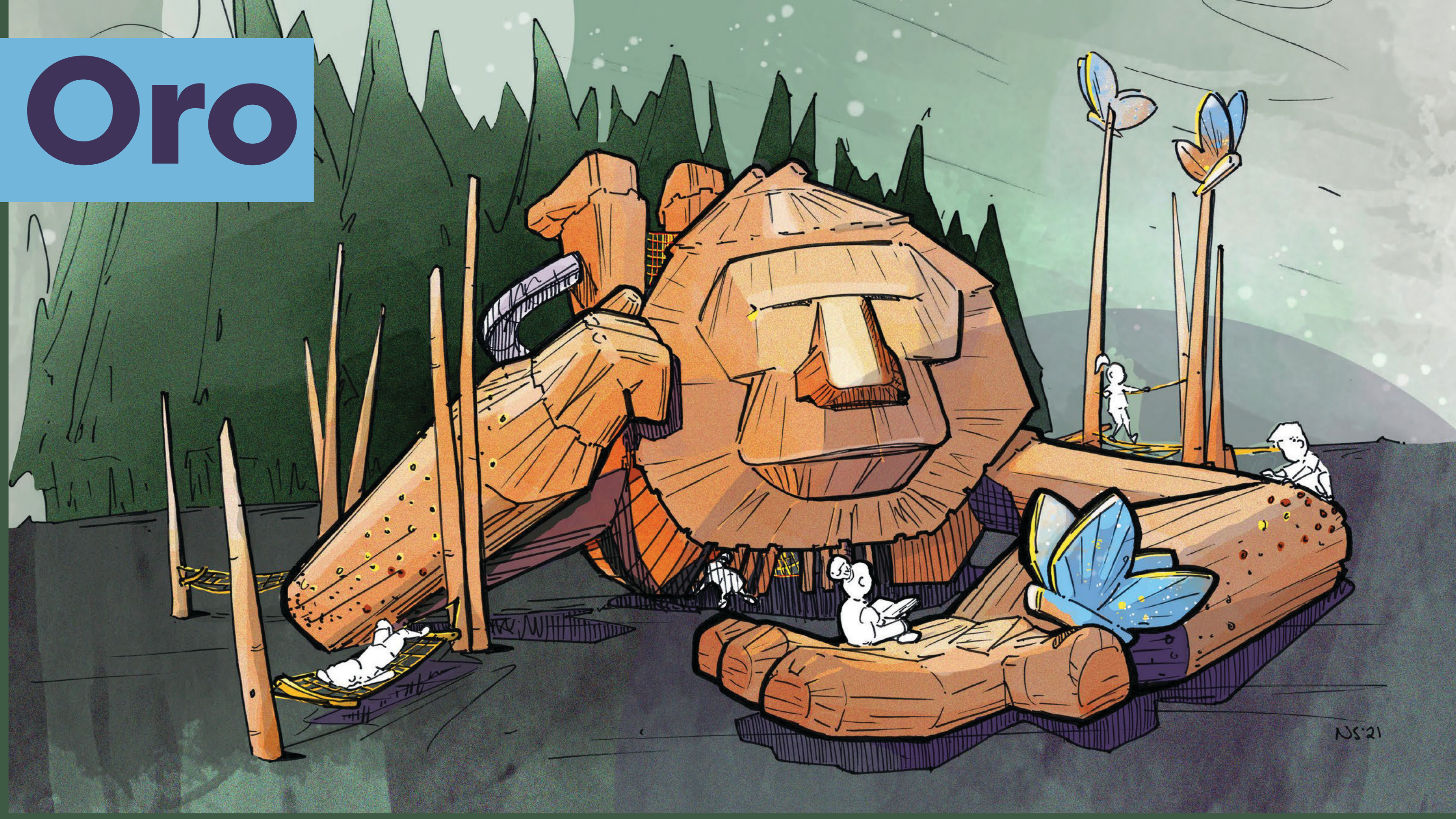


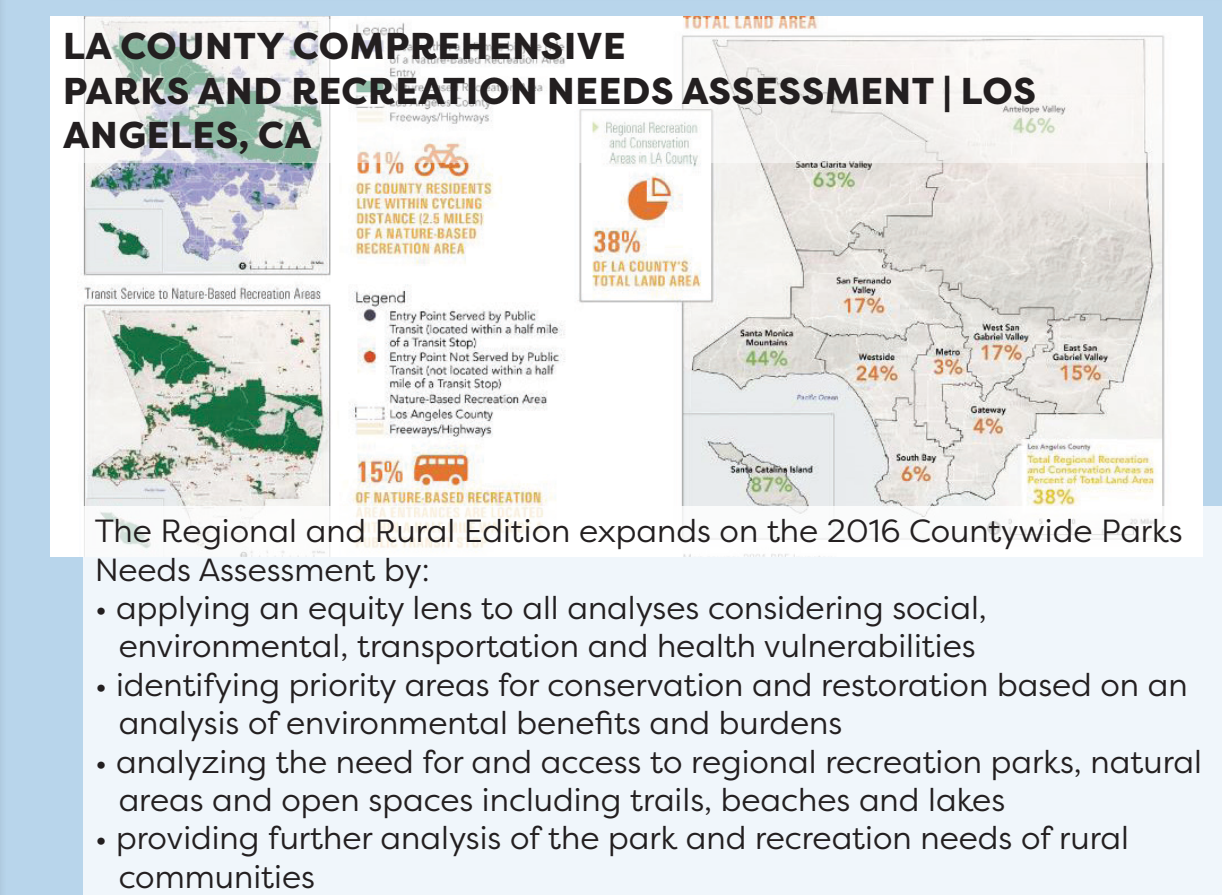
Finding Oro

53rd Avenue Park West,
Hillsboro, OR

HOW DO WE CREATE
MORE VIBRANT AND
INCLUSIVE COMMUNITY
SPACES?



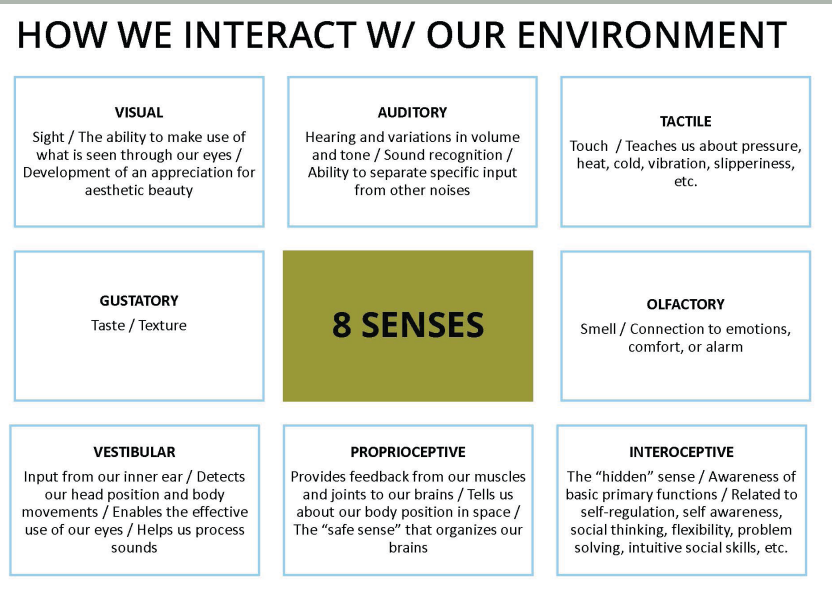
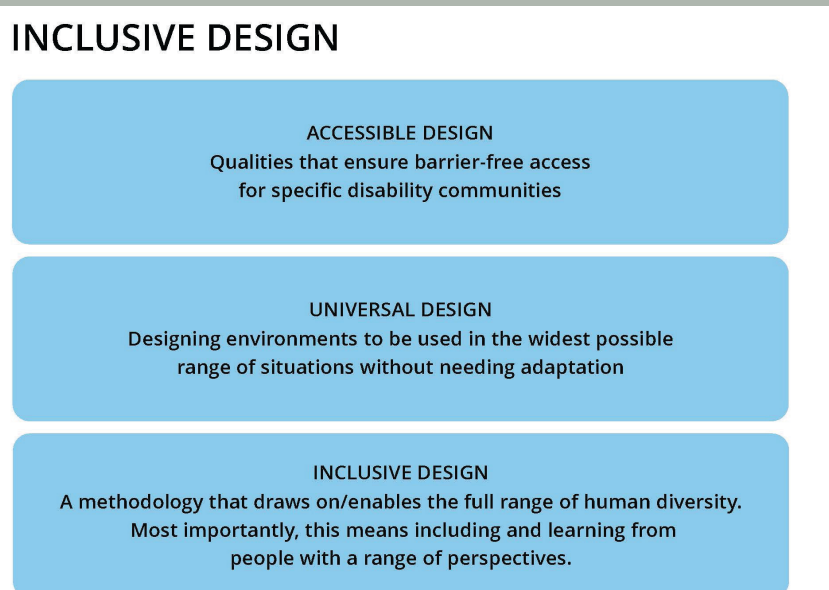
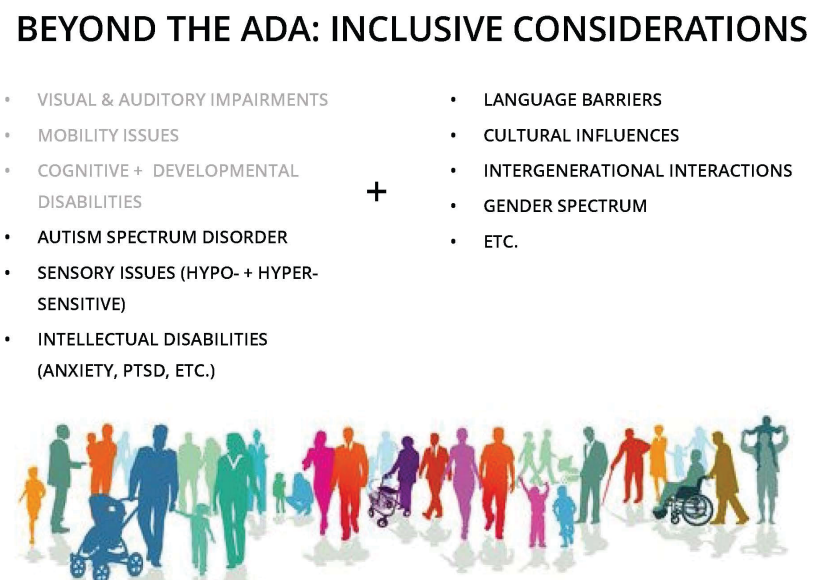
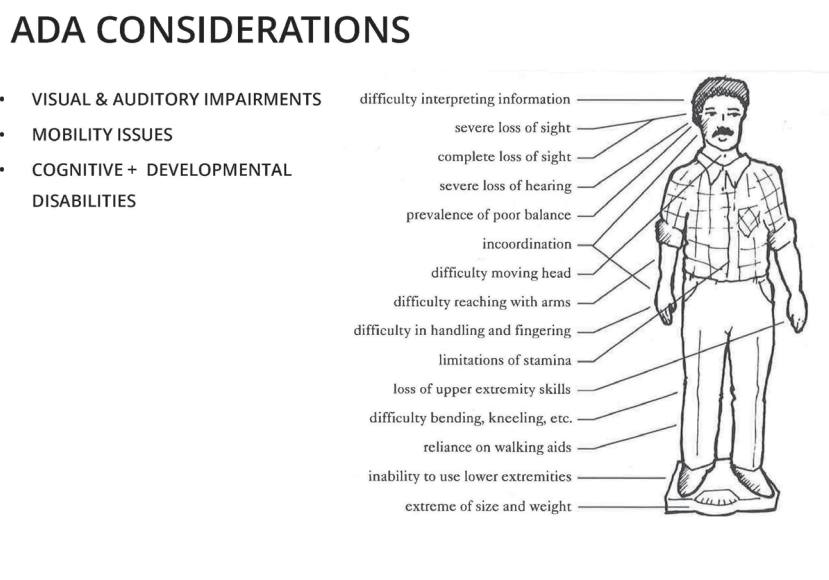
ADDITIONAL EXAMPLES FROM MIG'S PORTFOLIO



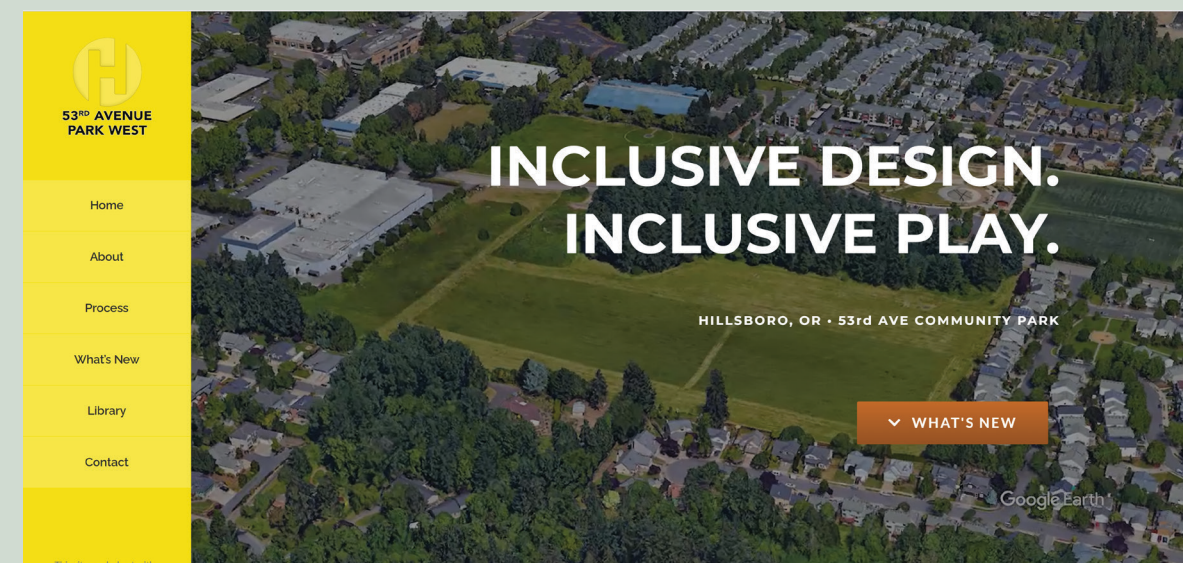
“Inclusive design doesn't mean you're designing one thing for all people. It means you're designing a diversity of ways for people to participate in an experience so that everyone has a sense of belonging.”

—Susan Goltsman
MIG Founding Principal

SHARE



LISTEN AND LEARN



We wanted this process to be as accessible as possible. Our starting point was ADA requirements then we tried to anticipate what more we could do to welcome people in. Finally, and most importantly, we continued asking how we could do better.

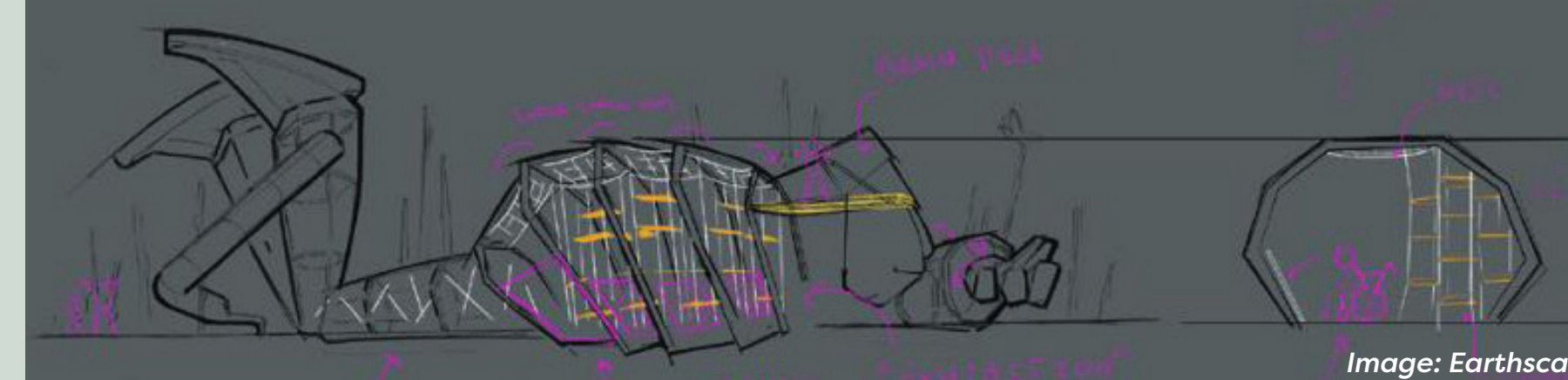
Our engagement process included providing all outreach materials in English and Spanish, evaluating the online survey and website to ensure WCAG compliance and best practices, and ensuring the project website was an ongoing source of information for community members.

REFLECT



The public engagement process led us to three initial site designs based on the features and qualities the local community wanted to experience in their park. We then took the designs back to them for a vote and they selected a design inspired by the current site character in the theme of "Woods Gone Wild."

TRANSLATE



We worked with Earthscape playground designers and builders to develop a play feature that feels like it's growing in and out of the woods.

Together we came up with a large forest giant named Oro, a name originally suggested by a local four-year-old resident named Forrest, and selected by the community through a vote. Oro, as in HillsBORO, also means gold in Spanish. People of all abilities can climb in, up, and around Oro.

FOLLOW THROUGH



ACTIVATE



OUT IN FRONT: JUSTICE, EQUITY, DIVERSITY, INCLUSION

MIG has offices in Seattle, Berkeley, Denver, Brooklyn, Fullerton, LA, Pasadena, Portland, Riverside, Sacramento, San Antonio, San Diego, San Jose, and Sonoma. Learn more at mig.com

PLANNING | DESIGN | COMMUNICATIONS | MANAGEMENT | SCIENCE | TECHNOLOGY