

# BALLARD FOOD BANK

SEATTLE, WA

CLIENT Ballard Food Bank

OWNERS REP Spectrum

LANDSCAPE ARCHITECT HEWITT

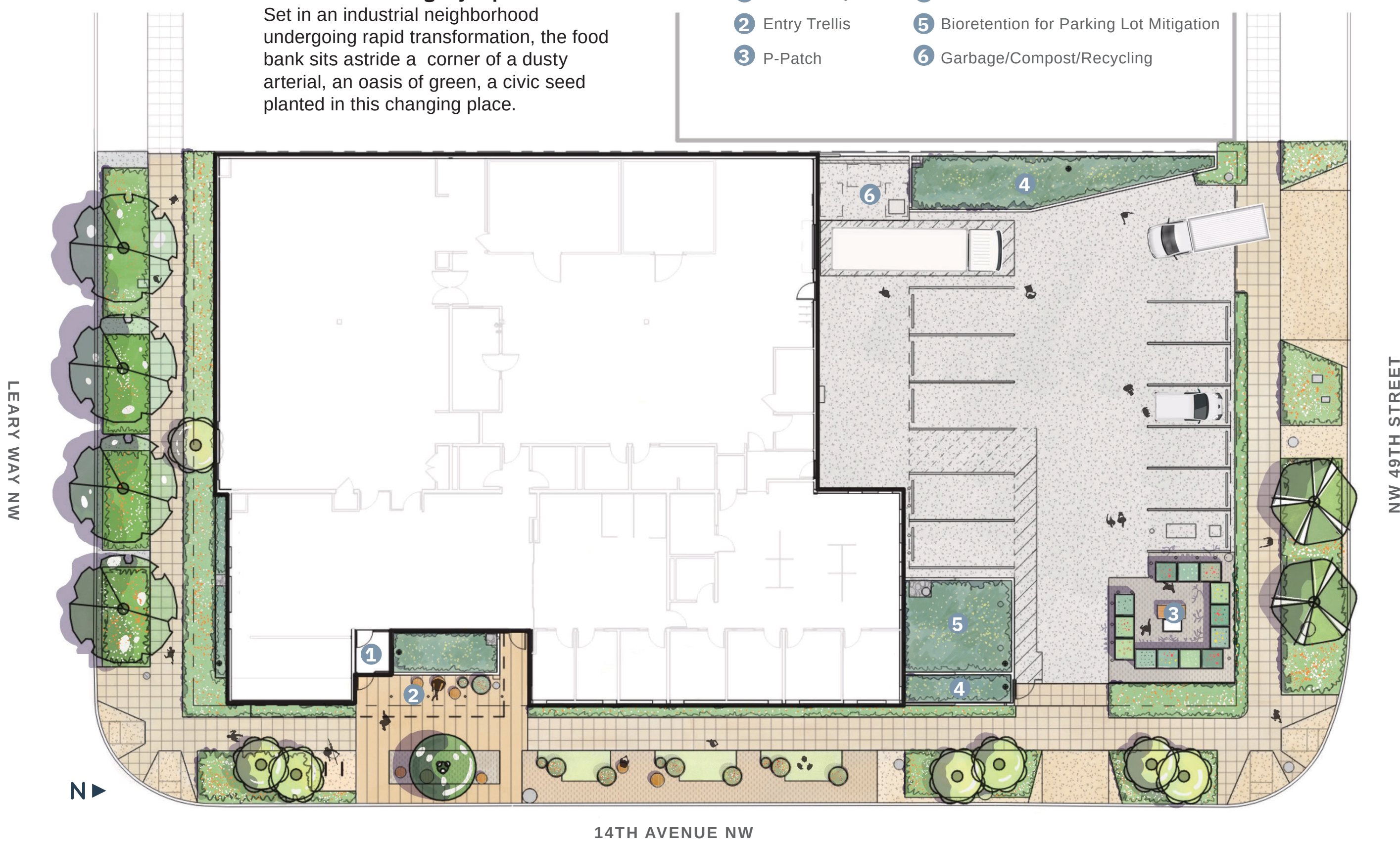
ARCHITECT Graham Baba Architects

CIVIL ENGINEER KPFF

**"WHAT FEEDS YOU?"** Literally writ large over the work yard at the Ballard Food Bank. Three streetscape frontages and densely utilized onsite planting areas work in concert to evoke welcome and purpose to aid the design team's goal of destigmatizing being a food bank patron. This is the little project that could, with every element serving multiple functions in service of the food bank's mission of bringing food and hope to their neighbors.

**A Small Yet Mighty Space**  
Set in an industrial neighborhood undergoing rapid transformation, the food bank sits astride a corner of a dusty arterial, an oasis of green, a civic seed planted in this changing place.

- 1 Public Entry
- 2 Entry Trellis
- 3 P-Patch
- 4 Blueberry and Hazelnut Bioretention
- 5 Bioretention for Parking Lot Mitigation
- 6 Garbage/Compost/Recycling



**Setting The Tone**  
The frontage facing the busy arterial is an interplay between architectural volumes and landscape. The warehouse volume is a backdrop for soft native textures, while the eastern volume gives a hint of the nearby entry with a residential scale treatment.



**Volunteer-Powered Agriculture**  
P-patches to be managed by volunteers to grow food to be added to the food bank store are placed in raised ADA-accessible height planters, taking advantage of proximity to the 8' perimeter fence to train twining vegetables.



**Welcome All**  
Supporting the entry sequence, a bioretention planter provides a soft foreground from the interior windowfront perch to the streetscape beyond.



**A Soft Landing**  
This frontage starts its day with a line of patrons, accommodated by seating, playfully arrayed down the frontage in combination with raised herb planters. The curbside area anticipates frequent circulation between short term vehicle parking and the building entry. With the curbside zone working hard to support foot traffic, a narrow strip of planter was retained at the back of the sidewalk to ground the architecture in green.