

## LETTER FROM THE CHAIR



*Incoming students, faculty, and professionals visit Berger Partnership for the PAC New Student Orientation Reception (September 24, 2018)*

Dear alumni and friends,

As we begin a new academic year here at the University of Washington we are excited to welcome another strong incoming class of undergraduate and graduate students. They will be joining a great group of students already enrolled. The programs and department are robust, and we are eagerly looking forward to the 2018-2019 academic year.

Department Founder  
and Professor Emeritus  
Richard Haag  
(1923 - 2018)

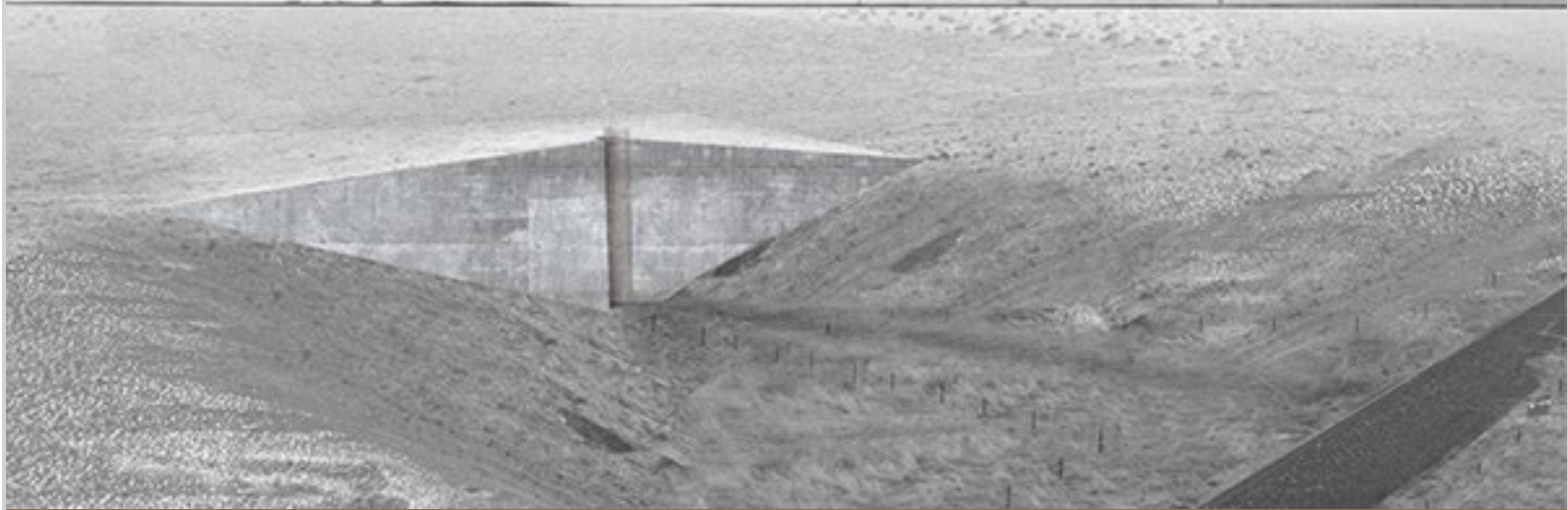
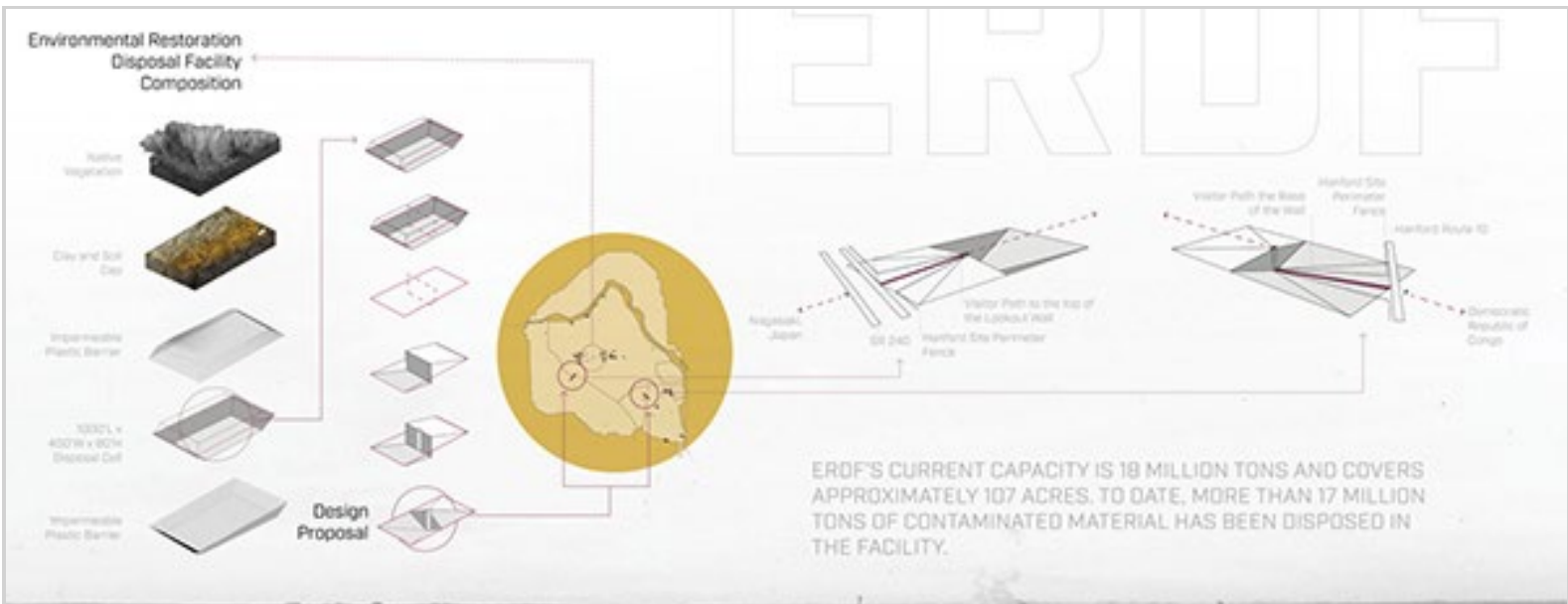


This year marks 60 years since **Richard Haag (1923 – 2018)** came to Seattle to start a department of landscape architecture at the University of Washington. It is an honor to lead the program today. We are saddened to note that Richard passed away in the spring. During his career, he rose to prominence as one of the most celebrated landscape architects of modern times and was beloved by generations of students who had the opportunity to learn from him. I was one of those students and to this day fondly reflect on how he was able to turn his insights on landscape architecture into life lessons important to us all.

At the time of his passing, Richard made it known that he did not want to be memorialized, and that we as a community should simply continue our work as instigators, advocates, facilitators, designers, planners, and citizens to better our built environments and strengthen the public realm. He did make it clear, however, that those wishing to recognize his legacy might consider donating to the [Richard Haag Endowed Scholarship in Landscape Architecture](#), established to support exceptional students who demonstrate a passion for nature, plants, and horticulture as sources of design inspiration. I believe that I can speak for all of us here in the department that we are better people for having had the opportunity to share portions of our life with him.

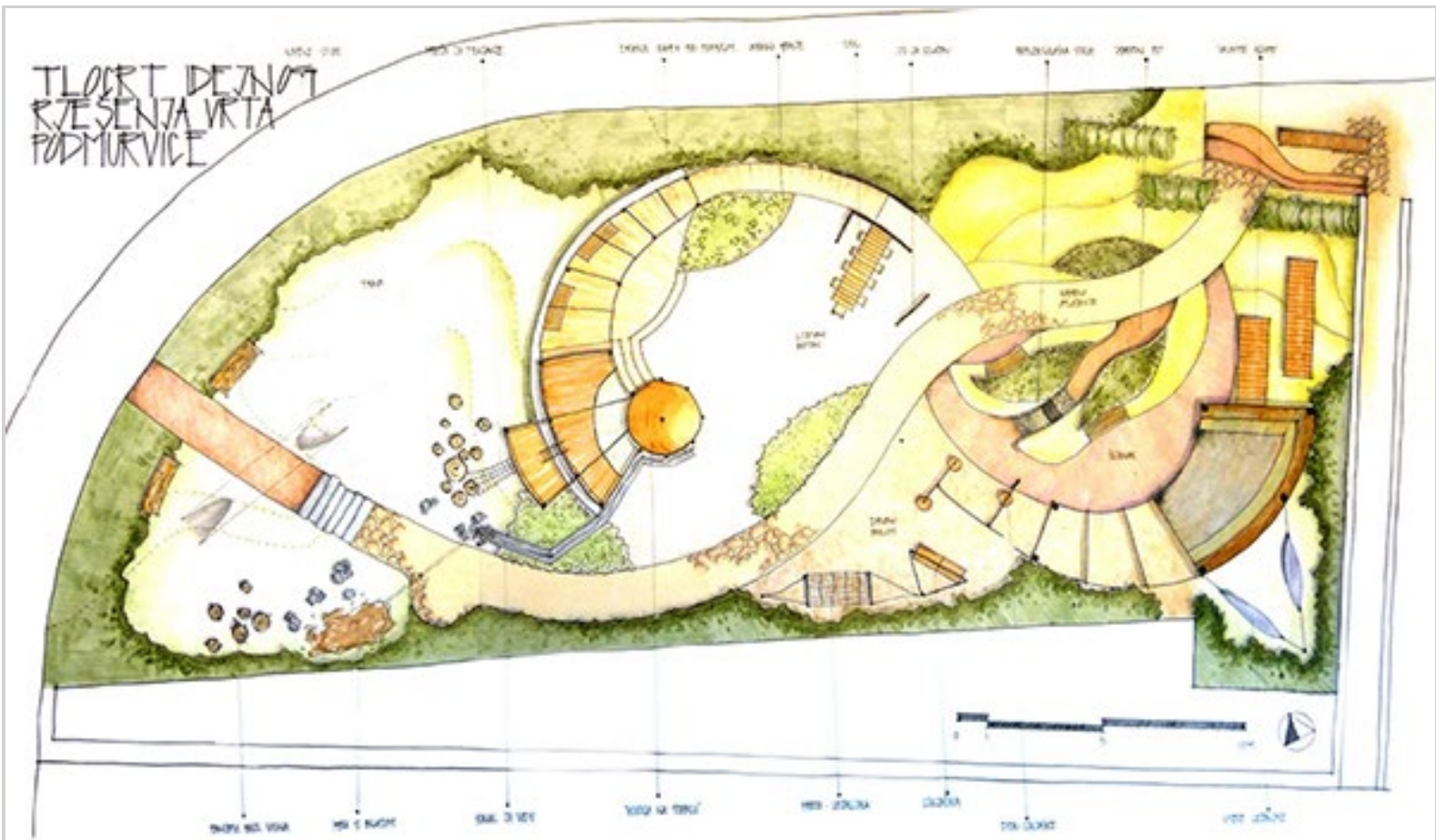
## STUDENT RECOGNITION

Picking up on Richard's cue, and looking ahead, it is always an honor and pleasure to acknowledge the accomplishments of our students; the future practitioners of the profession. They are dedicated and work extremely hard to succeed in our program and we celebrate them all. I would particularly like to recognize **Mo Li** (MLA 2019) and **Juliana Hom** (MLA 2019) for winning the student award for their submission to the design competition, *Displaced: Design for Inclusive Cities*, hosted by Design in Public and the American Institute of Architects, Seattle Chapter. Their proposal, *The Rose Triangle Commons*, is a complex and creative alternative for building community cohesion at a difficult location in the Rainier Valley. Their work was initiated in an advanced design studio course with lecturer **Mackenzie Waller**. Congratulations to all who were involved in the project and studio.



ASLA Student Honor Award in General Design: *Stop Making Sense: Spatializing the Hanford Site's Nuclear Legacy.* Cleanup Protocol: The design adopts Environmental Restoration Disposal Facility dimensions to direct viewers towards ERDF, Nagasaki, and the Democratic Republic of Congo.

We are also fortunate to celebrate significant recognition from the **2018 ASLA Student Awards**. **Kasia Keeley** (MLA 2017) and **Andrew Prindle** (MLA 2017), received an **Honor Award in the General Design Category** for their capstone project, [\*Stop Making Sense: Spatializing the Hanford Site's Nuclear Legacy.\*](#) Also, our **2016 Design/Build team** of graduate and undergraduate students led by Professor **Daniel Winterbottom** working on a study abroad program in Rijeka, Croatia received an **Honor Award in the Community Service Category** for their powerful project, [\*Croatian Monastery Continues to Heal: A Community Restorative Garden for Youth, the Blind, and the Elderly with Disabilities.\*](#) From critical and speculative thought to engaged build projects our students continue to challenge the norms of the discipline and profession.



*Dom Podmurvice Community Garden Site Plan: The garden is on the grounds of a former monastery in the industrial coastal city of Rijeka, Croatia. The site features a central event space, a nature play area, and a quieter gathering space. (Master Plan Team: Yuan Fang, Jean Ni, Aaron Parker, Monica Taylor, Kaitlin Wicklander)*

Over the past year, our students have excelled in studio developing a wide array of projects from designing marine reef structures in the Salish Sea led by **Iain Robertson** and lecturer **Brooke Sullivan** to collaborative urban design visioning with the Ethiopian Community in Seattle led by lecturer **Mackenzie Waller** to speculative public art investigations for the streets of Rome, Italy led by myself and **Julie Parrett**. This past year, our graduate capstone studio, *River | City | Slum*, worked with an underserved community in Kathmandu, Nepal to design and build temporary public structures and street furniture to support the community and encourage engagement with their neighbors. The work was coordinated and led by **Ben Spencer**, Adjunct Associate Professor **Laure Heland**, and lecturer **Brian Gerich**. All of the work, whether here or around the world, has been inspiring, and we congratulate all of the students for their eager engagement, critical thinking, and willingness to regularly work in areas and through processes that is well beyond their realm of comfort.

## STAFF + FACULTY

This year we have also focused on building staff support for the Department. We hired **Nick Dreher** as the Undergraduate Program Advisor and long-time lecturer, **Julie Parrett** to a full-time position as Senior Lecturer with duties both in teaching and as the Graduate Program Advisor. These changes enable our faculty to strengthen their teaching, research, and scholarship. This past year, we taught more than 50 courses, realized more than \$2.3 million in active or newly attained research funding, produced more than 35 scholarly publications, and accepted nearly 60 invitations to speak or collaborate at scholarly or

professional venues around the globe.

Highlights of this work include **Jeff Hou**'s recent co-edited book, *Design as Democracy: Techniques for Collective Creativity* (2017, Island Press), being awarded **EDRA's Book of the Year award**, the release of **Daniel Winterbottom**'s co-authored book with Chongxian Chen, *Healthy Landscapes: A Foundational Reader* (2018, China Architecture & Building Press), and Julie Johnson's participation in the University of Washington's Runstad Center Affiliate Fellows program and recent presentation on urban informality in South Africa.

We congratulate **Lynne Manzo** on her advancement from Associate Professor to Professor. A well-deserved promotion, we are extremely proud of Lynne and thankful for her dedication and contributions to the Department and discipline. We would also like to recognize Professor **Tha•sa Way**, lecturer and long-time PAC member **Sandy Fischer**, and department friend **Kas Kincaid** for being elevated to the **2018 ASLA Council of Fellows**.

As is longstanding tradition in the department, many of the faculty have in the recent past or will direct study abroad opportunities. I was fortunate to co-teach a study abroad program in Italy with **Julie Parrett** last autumn, **Ben Spencer** and **Laure Heland** taught a two-quarter program in Nepal, **Daniel Winterbottom** taught a summer studio in Sweden and is currently in Croatia with another group, and **Nancy Rottle** is off to teach in New Zealand in the winter. I am sure that many of you took advantage of the opportunity to study abroad while in school and recognize the benefits for the individual student and the program. We strongly encourage all of our students to enroll in these opportunities.

## DEPARTMENT INITIATIVES + EVENTS

We are fast approaching our 60th year as a department and we continue to build on the strong foundations of our predecessors focusing on issues of urban ecological design, engaged through initiatives in social justice and activism, ecological infrastructure, ecological learning and literacy, and human and environmental health.

This past year we hosted notable lectures and events including landscape architect **Gina Ford** of Agency Landscape + Planning, Boston. Through our *Drawing in Design* series, we brought **Alma du Solier** of Hood Design, Oakland, and **Ron Henderson** of the Illinois Institute of Technology, Chicago. And on October 4th, we will also be welcoming graphic designer **Michael Bierut** of Pentagram, New York. We invite you to join us for his talk.

RSVP FOR 10/4 LECTURE



This autumn, we are also co-sponsoring an exhibit with **Gustafson, Guthrie, Nichol (GGN)** in the **Gould Gallery** titled, *Paper to Place*. The exhibit is to celebrate GGN's recognition with the 2017 ASLA Firm of the Year Award. This award is the highest honor the ASLA may bestow upon a landscape architecture firm in acknowledgement of their distinguished and influential work. Doors opened this week, but plan on joining us for an exhibit reception and pre-release book signing with author and Professor **Tha•sa Way**, photographer Catherine Tighe, and GGN's founders and collaborators as we celebrate the exhibit and new monograph, **GGN: Landscape 1999 ð 2018**.

GGN



# Paper to Place

An exhibit capturing GGN's process in designing three-dimensional landscapes through two-dimensional inquiries and discoveries

Drawings by GGN  
Photographs by Catherine Tighe

**W** DEPARTMENT OF LANDSCAPE ARCHITECTURE  
UNIVERSITY of WASHINGTON  
College of Built Environments

GOULD GALLERY  
Sep 26 - Dec 7, 2018

Open M/Tu/W/F 12-5pm Th 12-7pm  
Closed Weekends and 11/12, 22, 23

GOULD GALLERY  
September 26 - December 7  
M T W F : 12 to 5 PM  
Th : 12 to 7 PM  
Sa Su : CLOSED

We thank all of you for your continued dedication and commitment to the profession and the department, and we will keep you posted on other events and happenings in the department and college.

## SUPPORTING OUR STUDENTS

As a department, our commitment is to the education of the *whole* student. We recognize that financial constraints are often the primary reason why students don't succeed in our department and the larger university. And yet, we are only able to offer financial assistance to 30% of our students. With your help, we are dedicated to **raising funds that directly support student scholarships** which alleviate some of the students' financial burdens.

The success of the next generation of our profession is dependant on creating opportunities and training for those within our college. We hope to achieve this through **funding a reoccurring 2-year teaching fellowship**. As a field that is often one step behind public need, and one step ahead of public understanding, we will always be in need of creative practitioners and educators that can push upon and stretch the nebulous bounds of our profession. Our hope is that we will be able to support the growth and development of the next generation of educators in landscape architecture and urbanism.

MAKE A GIFT



## GRATITUDE

With my first year as Department Chair now behind me, I fully recognize and appreciate all the efforts of our staff, faculty, student employees, and professional advisory council to not only keep the Department up and running, but for it to be buzzing with opportunity and optimism. Thank you for all that you do.

I would also like to recognize Dean **John Schaufelberger**. After six and a half years as Dean of the College of Built Environments, he will be stepping down from his administrative role and returning to the faculty. During his tenure, John has supported programs and we are in a much better place because of his leadership. On January 1, 2019, we will be welcoming Dean **Renže Cheng** to the College and very much look forward to working with her.

While maybe longer than it needs to be, I believe this letter reflects the dedication of our community and the quality of work that our students, staff, and faculty were engaged with in the past year. On behalf of the Department of Landscape Architecture at the University of Washington, I thank you for your continued support and hope to see you at the university for one of our many events, at the **ASLA Alumni Tailgate this October in Philadelphia**, around Seattle, or wherever our paths may cross.

Sincerely,



**Ken Yocom, PhD, ASLA**  
Associate Professor  
and Department Chair

[CBE HOME](#)

[DEPARTMENT HOME](#)

[GIVING](#)



[CONTACT US](#) | [PRIVACY](#) | [TERMS](#)

© 2018 UW Landscape Architecture | UW Box 355734 | Seattle WA 98195

This email was sent to {{lead.Email Address}}  
[Unsubscribe](#) or [change your email preferences](#)