

RELAXING ON THE HIGHWAY

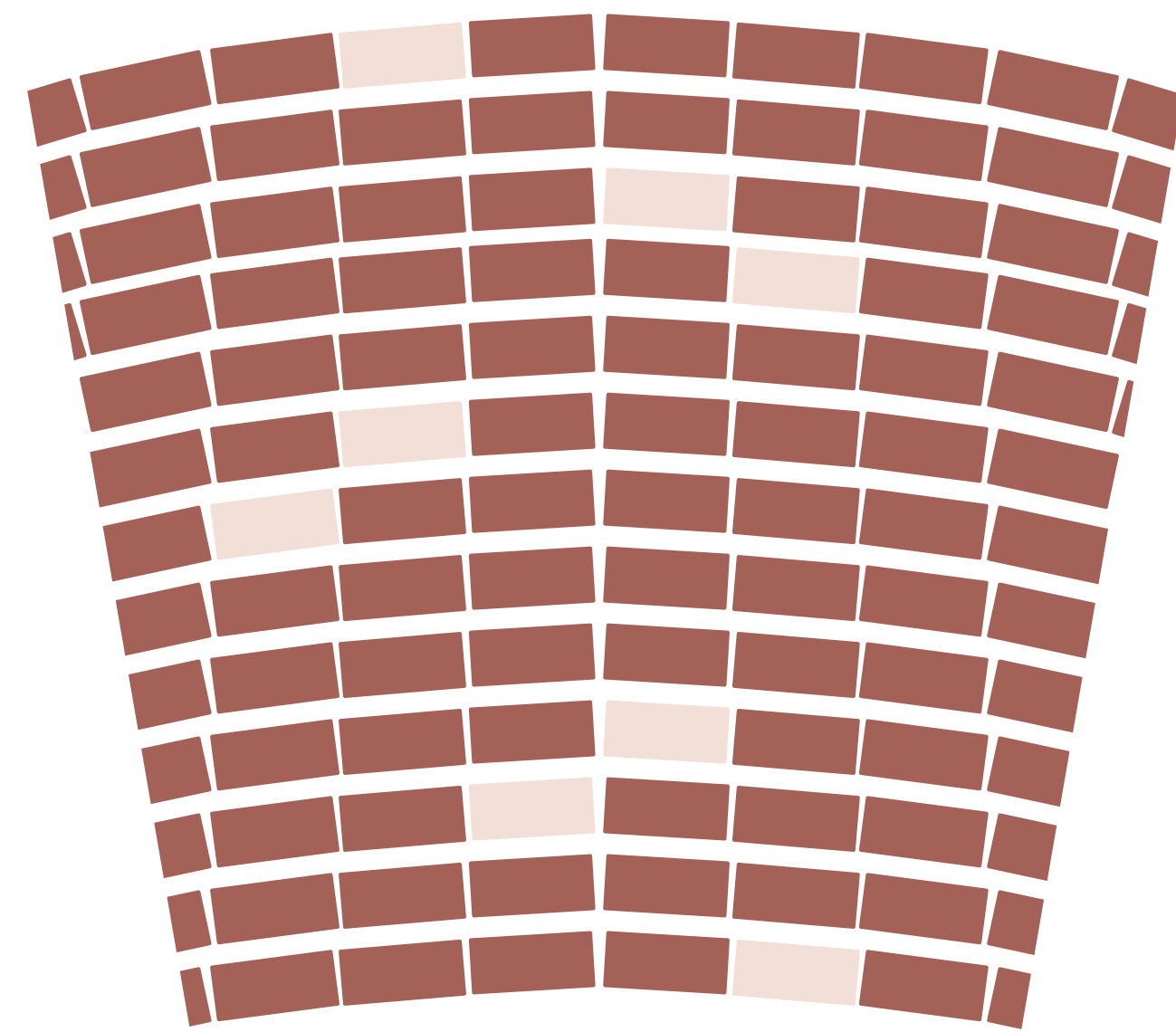
Reenvisioning Red Square

Central Plaza, informally known as Red Square, is the throbbing heart of the UW campus. Its five axes bring many students, faculty, staff, and visitors through the site daily. The site is used not only as a passage, but for eating, meeting, dancing, celebrating, and protesting. Informed by observation and recommendations in the UW Landscape Framework Plan, our priorities in reimagining the site were to **maintain current uses** for the plaza, **retain the red brick character** and **manage runoff, foster opportunities to sit, eat and connect**, and **allow all people to feel welcome** through accessibility improvements, wayfinding markers, and a naturalistic planting scheme.

ACCESSIBILITY & ORIENTATION



Step/ramp entrance from 15th Ave.



Precedent Images



PAUSING & RESTING



Benches by new tree facing Gerberding.

Accessibility | Three entrances were modified into elegant points of equitable access. We achieved this by integrating the stairs and the ramp, along with plantings and seating to become an enjoyable experience for everyone who enters the site.

Accessibility | Existing small sets of stairs, (outside Odegaard and at the entrance to the Liberal Arts Quad,) transformed into accessible ramps.

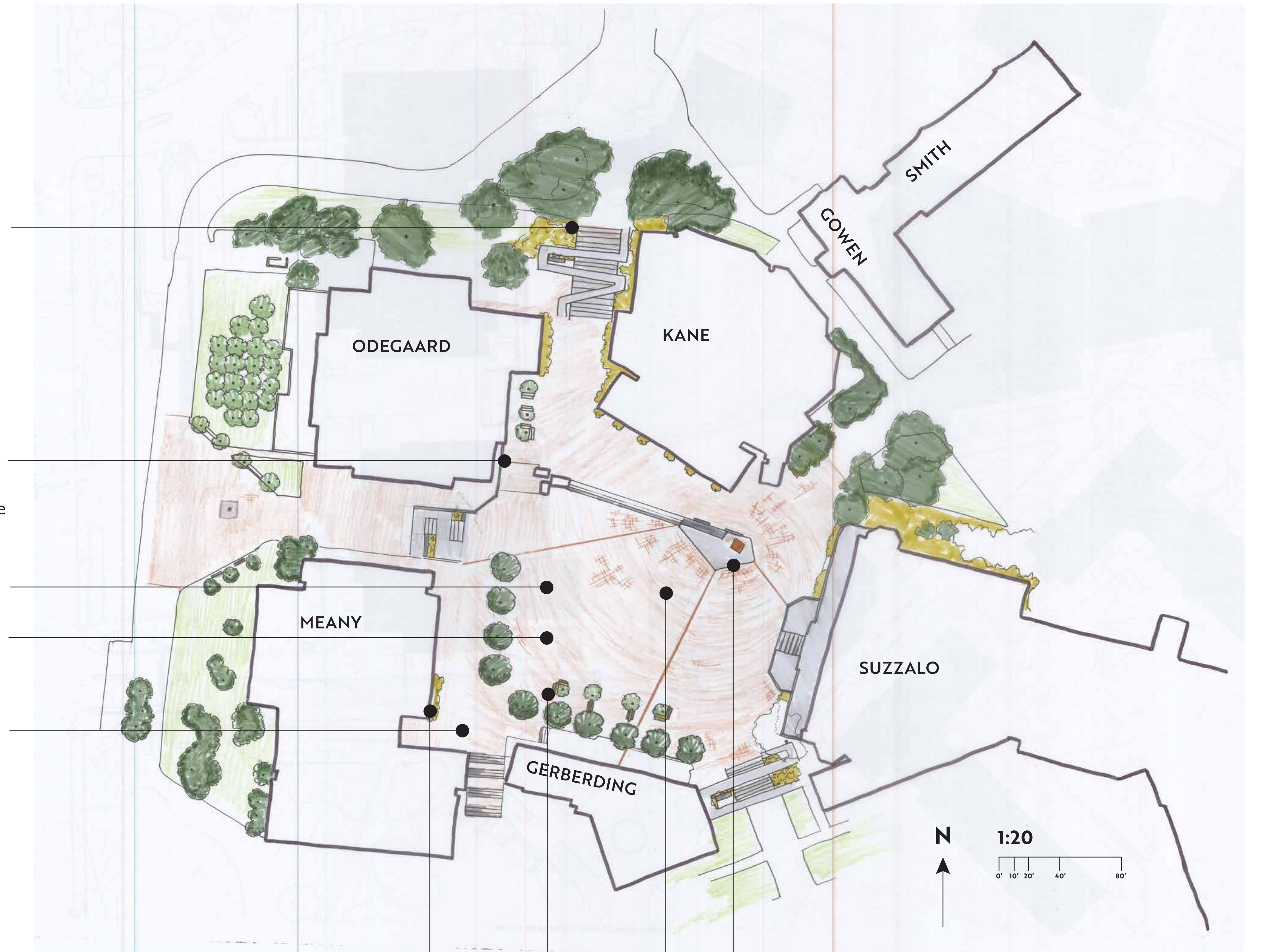
Bricks | Bricks trimmed to be semi-permeable - contributing to less pooling and runoff

Bricks | Bricks sandblasted to create a non-slip surface

'Points of Light' | To make the space more inviting, and guide people into and through it, we propose inlaid glass modular ground lighting features that are embedded within the bricks. These features are concentrated around the exterior perimeter, and bleed into the interior of the space.

Trees and benches are underlit.

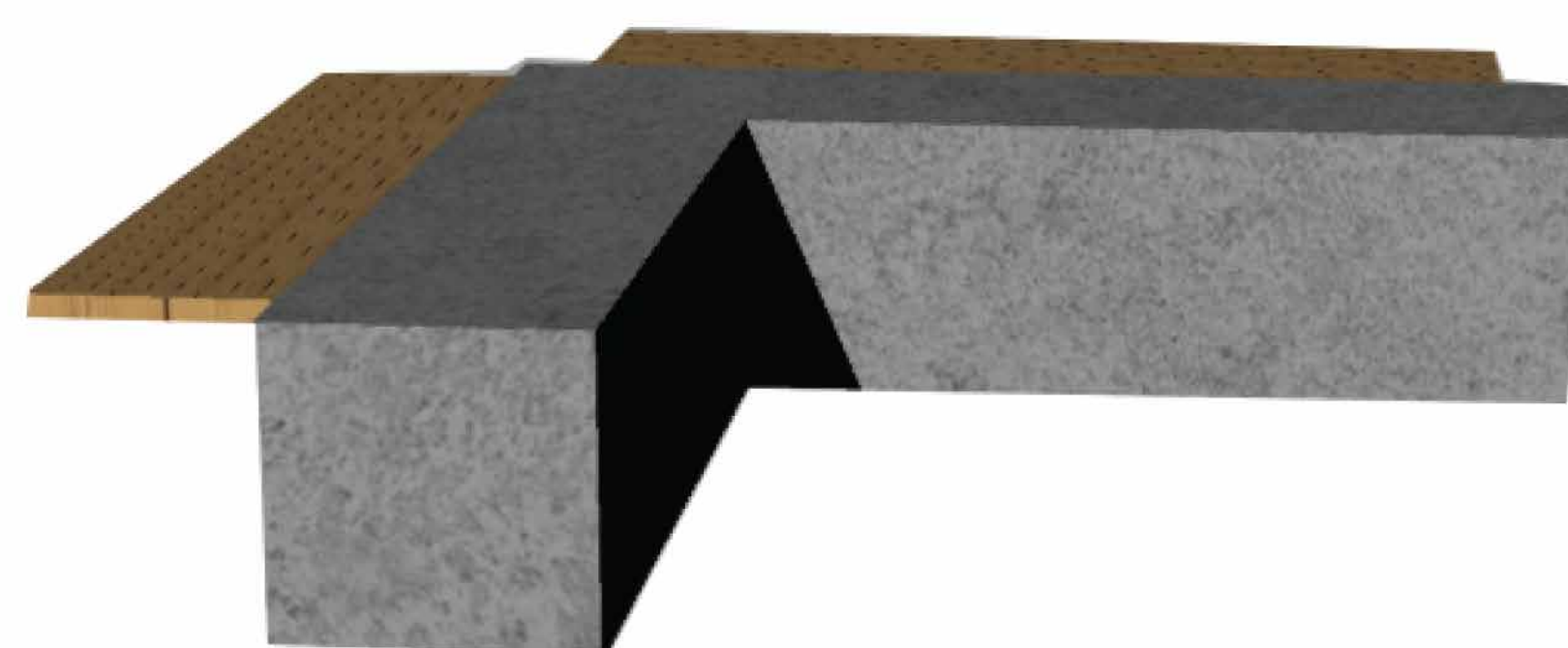
Wayfinding | Select transparent glass underlit pavers will be inscribed with wayfinding text and placed near entrances into Red Square.



Perimeter Plantings | In order to "soften the edges," and make the site more inviting, we included low-lying border plantings. Because this is the first place a lot of new UW visitors experience, we wanted to create a more inviting and orienting first impression.

Seating | 'Outdoor Rooms' | To allow opportunities to stop and linger, we included out-of-the-way seating that's enclosed by trees.

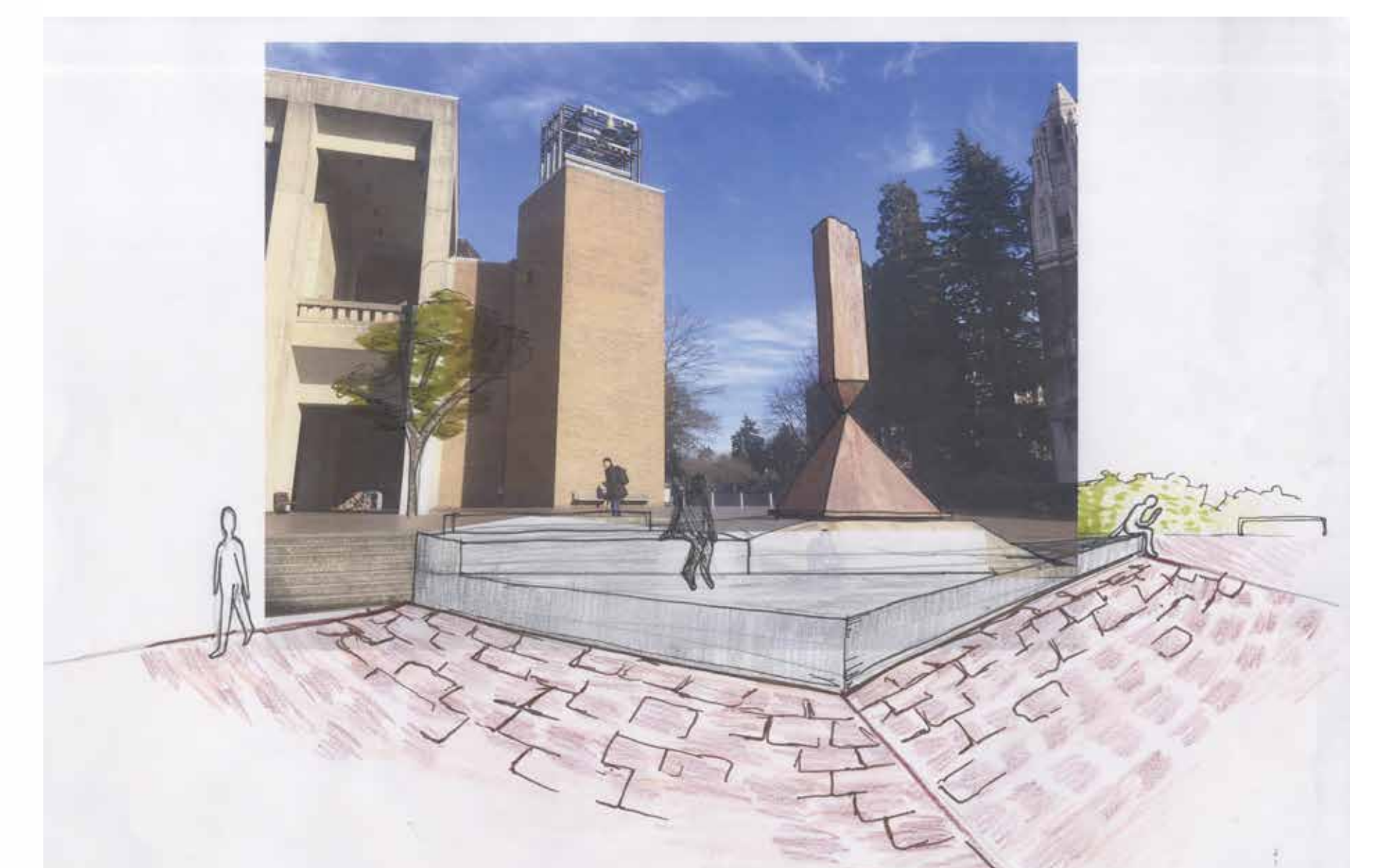
More benches added throughout site.



Platform | We created a large platform adjacent to the steps and obelisk outside Kane Hall. The platform doubles as seating and a place to demonstrate - a critical use for the space that we want to maintain.

Bricks | Bricks relaid to radiate towards the "stage" outside Kane Hall. This serves to acknowledge and highlight the importance of public demonstrations in the space.

Square largely left open to accommodate many large gatherings, events and, movement of people and vehicles throughout the site.



Platform and radial brick pattern facing Kane Hall.